

Anti-ENOB Antibody (Center)

Catalog Number: A06845-2

About ENO3

ENOB is one of the three enolase isoenzymes found in mammals. This isoenzyme, a homodimer, is found in skeletal muscle cells in the adult. A switch from alpha enolase to beta enolase occurs in muscle tissue during development in rodents. Mutations in its gene can be associated with metabolic myopathies that may result from decreased stability of the enzyme.

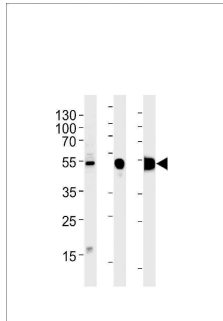
Overview

Product Name	Anti-ENOB Antibody (Center)
Reactive Species	Human, Mouse, Rat
Description	Boster Bio Anti-ENOB Antibody (Center) (Catalog # A06845-2). Tested in WB, IHC-P, Flow Cytometry application(s). This antibody reacts with Human, Mouse, Rat.
Application	Flow Cytometry, IHC-P, WB
Clonality	Polyclonal
Formulation	Purified polyclonal antibody supplied in PBS with 0.09% (W/V) sodium azide.
Storage Instructions	Maintain refrigerated at 2-8°C for up to 2 weeks. For long-term storage, store at -20°C in small aliquots to prevent freeze-thaw cycles.
Host	Rabbit
Uniprot ID	P13929

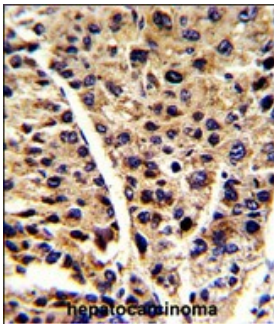
Technical Details

Immunogen	This ENOB antibody is generated from rabbits immunized with a KLH conjugated synthetic peptide between 237-264 amino acids from the Central region of human ENOB.
Predicted Reactive Species	Bovine, Pig
Isotype	Rabbit IgG
Purification	This antibody is prepared by Saturated Ammonium Sulfate (SAS) precipitation followed by dialysis against PBS.
Suggested Dilutions	WB: 1:1000 IHC-P: 1:50-1:100 FC: 1:10-1:50

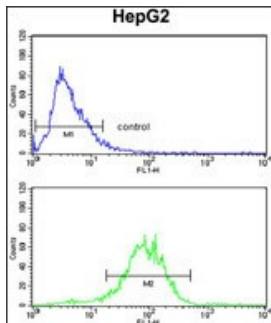
Anti-ENOB Antibody (Center) (A06845-2) Images



ENOB Antibody (Center) western blot analysis in RD cell line and mouse skeletal muscle, rat skeletal muscle lysates (35ug/lane). This demonstrates the ENOB antibody detected the ENOB protein (arrow).



Formalin-fixed and paraffin-embedded human hepatocarcinoma reacted with ENOB Antibody (Center), which was peroxidase-conjugated to the secondary antibody, followed by DAB staining. This data demonstrates the use of this antibody for immunohistochemistry; clinical relevance has not been evaluated.



ENOB Antibody (Center) flow cytometry analysis of HepG2 cells (bottom histogram) compared to a negative control cell (top histogram). FITC-conjugated goat-anti-rabbit secondary antibodies were used for the analysis.

Submit a product review to [Biocompare.com](https://www.biocompare.com)

Submit a review of this product to [Biocompare.com](https://www.biocompare.com) to receive a \$20 Amazon.com giftcard! Your reviews help your fellow scientists make the right decisions. Thank you for your contribution.



Anti-ENOB Antibody (Center)

For Research Use Only. Not for use in diagnostic procedures.