

Anti-AMOTL2 Antibody Picoband®

Catalog Number: A06852

About AMOTL2

Angiomotin-like protein 2 is a protein that in humans is encoded by the AMOTL2 gene. Angiomotin is a protein that binds angiostatin, a circulating inhibitor of the formation of new blood vessels (angiogenesis). It mediates angiostatin inhibition of endothelial cell migration and tube formation in vitro. The protein encoded by this gene is related to angiomotin and is a member of the motin protein family. Alternative splicing results in multiple transcript variants of this gene.

Overview

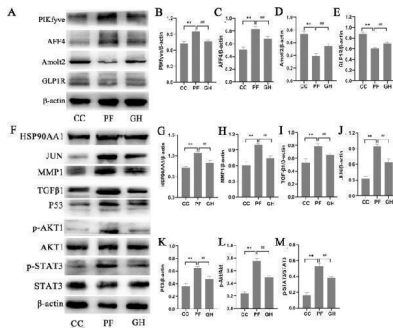
Product Name	Anti-AMOTL2 Antibody Picoband®
Reactive Species	Human, Mouse, Rat
Description	Boster Bio Anti-AMOTL2 Antibody Picoband® catalog # A06852. Tested in ELISA, IF, ICC, WB applications. This antibody reacts with Human, Mouse, Rat. The brand Picoband indicates this is a premium antibody that guarantees superior quality, high affinity, and strong signals with minimal background in Western blot applications. Only our best-performing antibodies are designated as Picoband, ensuring unmatched performance.
Application	ELISA, IF, ICC, WB
Clonality	Polyclonal
Formulation	Each vial contains antibody formulated with stabilizing components, 0.9mg NaCl, 0.2mg Na ₂ HPO ₄ , 0.01mg NaN ₃ . *This antibody is supplied in a stabilized formulation. Compatibility with conjugation reactions depends on the chemistry of the conjugation method used. For conjugation methods that are not compatible with the stabilizing components present in this formulation, a carrier-free antibody format is required.
Storage Instructions	Store at -20°C for one year from date of receipt. After reconstitution, at 4°C for one month. It can also be aliquotted and stored frozen at -20°C for six months. Avoid repeated freeze-thaw cycles.
Host	Rabbit
Uniprot ID	Q9Y2J4

Technical Details

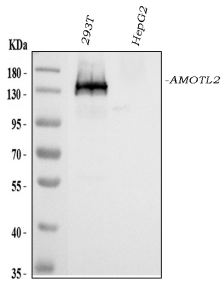
Immunogen	E. coli-derived human AMOTL2 recombinant protein (Position: A401-Q480).
Recommended Detection Systems	Boster recommends Enhanced Chemiluminescent Kit with anti-Rabbit IgG (EK1002) for Western blot.
Cross Reactivity	No cross-reactivity with other proteins.

Isotype	Rabbit IgG
Form	Lyophilized
Concentration	Adding 0.2 ml of distilled water will yield a concentration of 500 ug/ml.
Suggested Dilutions	Western blot, 0.1-0.5ug/ml, Human Immunocytochemistry/Immunofluorescence, 5ug/ml, Human ELISA, 0.1-0.5ug/ml, -

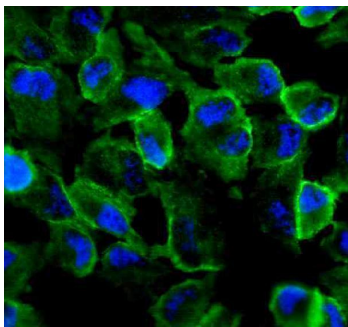
Anti-AMOTL2 Antibody Picoband® (A06852) Images



Validation of drug targets of proteomics and network pharmacology with western blot. A Western blot images of PIKfyve, AFF4, Amotl2, and GLP1R in the lung tissue. B - E Data were expressed as the expression ratio of PIKfyve/beta-actin, AFF4/beta-actin, Amotl2/beta-actin, and GLP1R/beta-actin (n = 3 per group). F Western blot images of HSP90AA1, MMP1, TGF-beta1, JUN, P53, p-Akt, Akt, p-STAT3 and STAT3 in the lung tissue. G - M : Data were expressed as the expression ratio of HSP90AA1/beta-actin, MMP1/beta-actin, TGF-beta1/beta-actin, JUN/beta-actin, P53/beta-actin, p-Akt/Akt, and p-STAT3/STAT3 (n = 3 per group). * P



Western blot analysis of AMOTL2 using anti-AMOTL2 antibody (A06852). Electrophoresis was performed on a 10% SDS-PAGE gel at 80V (Stacking gel) / 120V (Resolving gel) for 2 hours. The sample well of each lane was loaded with 30 ug of sample under reducing conditions. Lane 1: human 293T whole cell lysates, Lane 2: human HepG2 whole cell lysates. After electrophoresis, proteins were transferred to a nitrocellulose membrane at 150 mA for 50-90 minutes. Blocked the membrane with 5% non-fat milk/TBS for 1.5 hour at RT. The membrane was incubated with rabbit anti-AMOTL2 antigen affinity purified polyclonal antibody (A06852) at 0.5 ug/mL overnight at 4°C, then washed with TBS-0.1%Tween 3 times with 5 minutes each and probed with a goat anti-rabbit IgG-HRP secondary antibody (Catalog # BA1054) at a dilution of 1:5000 for 1.5 hour at RT. The signal is developed using an ECL Plus Western Blotting Substrate (Catalog # AR1196-200) with Tanon 5200 system. A specific band was detected for AMOTL2 at approximately 130-150 kDa. The expected band size for AMOTL2 is at 86 kDa.



IF analysis of AMOTL2 using anti-AMOTL2 antibody (A06852). AMOTL2 was detected in an immunocytochemical section of Hela cells. Enzyme antigen retrieval was performed using IHC enzyme antigen retrieval reagent (AR0022) for 15 mins. The cells were blocked with 10% goat serum. And then incubated with 5 ug/mL rabbit anti-AMOTL2 Antibody (A06852) overnight at 4°C. DyLight® 488 Conjugated Goat Anti-Rabbit IgG (BA1127) was used as secondary antibody at 1:500 dilution and incubated for 30 minutes at 37°C. The section was counterstained with DAPI. Visualize using a fluorescence microscope and filter sets appropriate for the label used.

Submit a product review to [Biocompare.com](https://www.biocompare.com)

Submit a review of this product to [Biocompare.com](https://www.biocompare.com) to receive a \$20 Amazon.com giftcard! Your reviews help your fellow scientists make the right decisions. Thank you for your contribution.



Anti-AMOTL2 Antibody

For Research Use Only. Not for use in diagnostic procedures.