

## Anti-SLC22A16 Antibody

Catalog Number: A06860-1

### About SLC22A16

This gene encodes a member of the organic zwitterion transporter protein family which transports carnitine. The encoded protein has also been shown to transport anticancer drugs like bleomycin (PMID: 20037140) successful treatment has been correlated with the level of activity of this transporter in tumor cells.

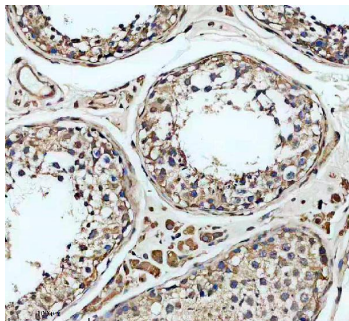
### Overview

Product Name	Anti-SLC22A16 Antibody
Reactive Species	Human
Description	Boster Bio Anti-SLC22A16 Antibody catalog # A06860-1. Tested in IHC applications. This antibody reacts with Human.
Application	IHC
Clonality	Polyclonal
Formulation	Each vial contains 4 mg Trehalose, 0.9 mg NaCl, 0.2 mg Na <sub>2</sub> HPO <sub>4</sub> .
Storage Instructions	At -20°C for one year from date of receipt. After reconstitution, at 4°C for one month. It can also be aliquotted and stored frozen at -20°C for six months. Avoid repeated freezing and thawing.
Host	Rabbit
Uniprot ID	Q86VW1

### Technical Details

Immunogen	A synthetic peptide corresponding to a sequence in the middle region of human SLC22A16.
Form	Lyophilized
Concentration	Adding 0.2 ml of distilled water will yield a concentration of 500 ug/ml.
Purification	Immunogen affinity purified.
Suggested Dilutions	Immunohistochemistry(Paraffin-embedded Section), 2-5 ug/ml, Human

## Anti-SLC22A16 Antibody (A06860-1) Images



IHC analysis of SLC22A16 using anti-SLC22A16 antibody (A06860-1). SLC22A16 was detected in a paraffin-embedded section of human testis tissue. Heat mediated antigen retrieval was performed in EDTA buffer (pH 8.0, epitope retrieval solution). The tissue section was blocked with 10% goat serum. The tissue section was then incubated with 2 ug/ml rabbit anti-SLC22A16 Antibody (A06860-1) overnight at 4°C. Peroxidase Conjugated Goat Anti-rabbit IgG was used as secondary antibody and incubated for 30 minutes at 37°C. The tissue section was developed using HRP Conjugated Rabbit IgG Super Vision Assay Kit (Catalog # SV0002) with DAB as the chromogen.

## Submit a product review to Biocompare.com

Submit a review of this product to Biocompare.com to receive a \$20 Amazon.com giftcard! Your reviews help your fellow scientists make the right decisions. Thank you for your contribution.



Anti-SLC22A16 Antibody

For Research Use Only. Not for use in diagnostic procedures.