

## Anti-KV3.1 KCNC1 Antibody

Catalog Number: A06871-1

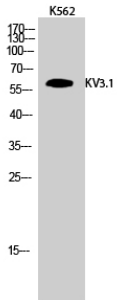
### Overview

Product Name	Anti-KV3.1 KCNC1 Antibody
Reactive Species	Human, Mouse, Rat
Description	Boster Bio Anti-KV3.1 KCNC1 Antibody catalog # A06871-1. Tested in ELISA, IHC, WB applications. This antibody reacts with Human, Mouse, Rat.
Application	ELISA, IF, IHC, WB
Clonality	Polyclonal
Formulation	Liquid in PBS containing 50% glycerol, 0.5% stabilizing protein and 0.02% sodium azide. This antibody is supplied in a stabilized formulation. Compatibility with conjugation reactions depends on the chemistry of the conjugation method used. For conjugation methods that are not compatible with the stabilizing components present in this formulation, a carrier-free antibody format is required.
Storage Instructions	Store at -20°C for one year. For short term storage and frequent use, store at 4°C for up to one month. Avoid repeated freeze-thaw cycles.
Host	Rabbit
Uniprot ID	P48547

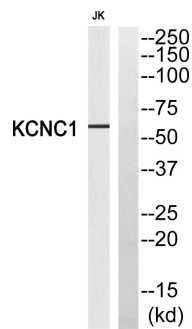
### Technical Details

Immunogen	Synthesized peptide derived from KV3.1 . at AA range: 190-270
Isotype	IgG
Form	Liquid
Concentration	1 mg/ml
Purification	The antibody was affinity-purified from rabbit antiserum by affinity-chromatography using epitope-specific immunogen.
Suggested Dilutions	WB 1:500-1:2000 IHC 1:100-1:300 ELISA 1:5000 IF 1:50-200

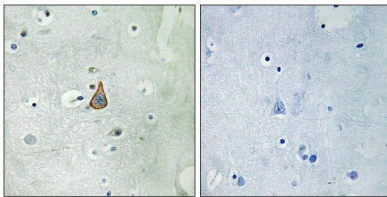
## Anti-KV3.1 KCNC1 Antibody (A06871-1) Images



Western Blot analysis of K562 cells using KV3.1 Polyclonal Antibody



Western blot analysis of KCNC1 Antibody. The lane on the right is blocked with the KCNC1 peptide.



Immunohistochemistry analysis of paraffin-embedded human brain, using KCNC1 Antibody. The lane on the right is blocked with the KCNC1 peptide.

### Submit a product review to [Biocompare.com](https://www.biocompare.com)

Submit a review of this product to [Biocompare.com](https://www.biocompare.com) to receive a \$20 Amazon.com giftcard! Your reviews help your fellow scientists make the right decisions. Thank you for your contribution.



Anti-KV3.1 KCNC1 Antibody

For Research Use Only. Not for use in diagnostic procedures.