

Anti-ADAM28 Antibody

Catalog Number: A06873

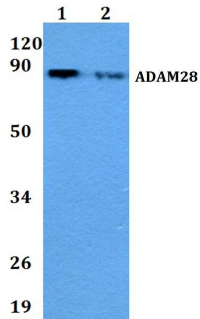
Overview

| | |
|----------------------|--|
| Product Name | Anti-ADAM28 Antibody |
| Reactive Species | Human, Mouse, Rat |
| Description | Boster Bio Anti-ADAM28 Antibody catalog # A06873. Tested in WB,IHC applications. This antibody reacts with Human,Mouse,Rat. |
| Application | IHC, WB |
| Clonality | Polyclonal |
| Formulation | Rabbit IgG, 1mg/ml in PBS with 0.02% sodium azide, 50% glycerol, pH7.2 |
| Storage Instructions | Store at -20°C for one year. For short term storage and frequent use, store at 4°C for up to one month. Avoid repeated freeze-thaw cycles. |
| Host | Rabbit |
| Uniprot ID | Q9UKQ2 |

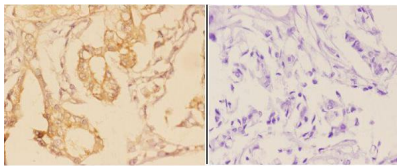
Technical Details

| | |
|---------------------|---|
| Immunogen | A synthetic peptide corresponding to residues in Human ADAM28. |
| Isotype | IgG |
| Form | Liquid |
| Concentration | 1 mg/ml |
| Purification | The antibody was affinity-purified from rabbit antiserum by affinity-chromatography using epitope-specific immunogen and the purity is > 95% (by SDS-PAGE). |
| Suggested Dilutions | WB: 1:500-1:1000 IHC: 1:50-1:200 |

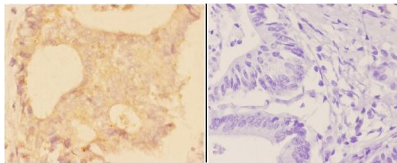
Anti-ADAM28 Antibody (A06873) Images



Western blot (WB) analysis of ADAM28 polyclonal antibody at 1:500 dilution Lane1:A549 whole cell lysate
Lane2:Raw264.7 whole cell lysate



Immunohistochemistry (IHC) analyzes of ADAM28 pAb in paraffin-embedded human breast carcinoma tissue at 1:50, showing membrane and secreted staining. Negative control (the right) Using PBS instead of primary antibody, secondary antibody is Goat Anti-Rabbit IgG-biotin followed by avidin-peroxidase.



Immunohistochemistry (IHC) analyzes of ADAM28 pAb in paraffin-embedded human colon carcinoma tissue at 1:50, showing membrane and secreted staining. Negative control (the right) Using PBS instead of primary antibody, secondary antibody is Goat Anti-Rabbit IgG-biotin followed by avidin-peroxidase.

Submit a product review to Biocompare.com

Submit a review of this product to Biocompare.com to receive a \$20 Amazon.com giftcard! Your reviews help your fellow scientists make the right decisions. Thank you for your contribution.



Anti-ADAM28 Antibody

For Research Use Only. Not for use in diagnostic procedures.