

Anti-EVER2 TMC8 Antibody

Catalog Number: A06892-1

About TMC8

Epidermodysplasia verruciformis (EV) is an autosomal recessive genodermatosis associated with a high risk of skin cancers resulting from a high susceptibility to infection by specific human papillomaviruses. Mutations in two homologous genes EVER1 and EVER2 cause the majority of EV cases. These two proteins form a complex and interact with the zinc transporter ZnT-1 in the endoplasmic reticulum. Cells lacking EVER2 accumulated higher levels of zinc in the nucleolus and nucleus compare to those cells with and intact EVER2 gene, indicating that one role of EVER2 is to regulate the intracellular distribution of zinc.

Overview

Product Name	Anti-EVER2 TMC8 Antibody
Reactive Species	Human, Mouse, Rat
Description	Boster Bio Anti-EVER2 TMC8 Antibody (Catalog # A06892-1). Tested in ELISA, WB, IHC-P, IF applications. This antibody reacts with Human, Mouse, Rat.
Application	ELISA, IF, IHC-P, WB
Clonality	Polyclonal
Formulation	EVER2 Antibody is supplied in PBS containing 0.02% sodium azide.
Storage Instructions	EVER2 antibody can be stored at 4°C for three months and -20°C, stable for up to one year. Avoid repeated freeze-thaw cycles. Antibodies should not be exposed to prolonged high temperatures.
Host	Rabbit
Uniprot ID	Q8IU68

Technical Details

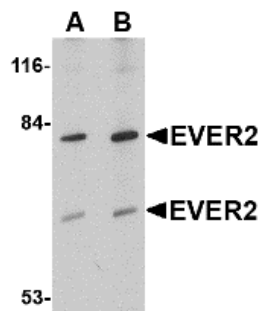
Immunogen	EVER2 antibody was raised against a 14 amino acid synthetic peptide from near the center of human EVER2. The immunogen is located within amino acids 300 - 350 of EVER2.
Predicted Reactive Species	Bovine
Cross Reactivity	At least three isoforms of EVER2 are known to exist; this antibody will only recognize the larger isoform. EVER2 has no cross-reactivity to EVER1.
Isotype	IgG
Form	Liquid
Concentration	1 mg/mL
Purification	EVER2 Antibody is affinity chromatography purified via peptide column.

Suggested Dilutions

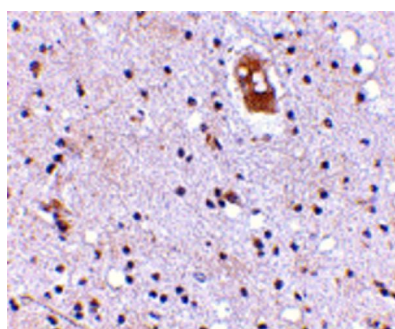
EVER2 antibody can be used for detection of EVER2 by Western blot at 1 - 2 ug/mL. Antibody can also be used for immunohistochemistry starting at 5 ug/mL. For immunofluorescence start at 20 ug/mL.

Antibody validated: Western Blot in human samples; Immunohistochemistry in human samples and Immunofluorescence in human samples. All other applications and species not yet tested. Optimal dilutions for each application should be determined by the researcher.

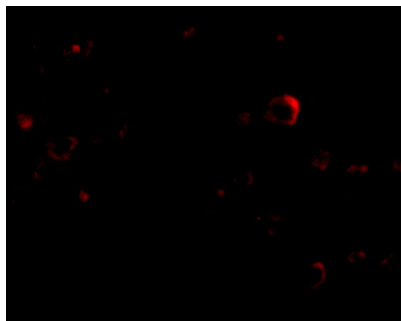
Anti-EVER2 TMC8 Antibody (A06892-1) Images



Western blot analysis of EVER2 in Jurkat cell lysate with EVER2 antibody at (A) 1 and (B) 2 ug/mL.



Immunohistochemistry of EVER2 in human brain with EVER2 antibody at 5 ug/mL.



Immunofluorescence of EVER2 in Human Brain cells with EVER2 antibody at 20 ug/mL.

Submit a product review to [Biocompare.com](https://www.biocompare.com)

Submit a review of this product to [Biocompare.com](https://www.biocompare.com) to receive a \$20 Amazon.com giftcard! Your reviews help your fellow scientists make the right decisions. Thank you for your contribution.



Anti-EVER2 TMC8 Antibody

For Research Use Only. Not for use in diagnostic procedures.