

Anti-CSRP1 Antibody

Catalog Number: A06894-1

About CSRP1

Could play a role in neuronal development.

Liebhaber S.A., Nucleic Acids Res. 18:3871-3879(1990).

Olsen J.V., Cell 127:635-648(2006).

Beausoleil S.A., Nat. Biotechnol. 24:1285-1292(2006).

Overview

Product Name	Anti-CSRP1 Antibody
Reactive Species	Human, Mouse, Rat
Description	Boster Bio Anti-CSRP1 Antibody catalog # A06894-1. Tested in WB,IHC,ICC,IP applications. This antibody reacts with Human,Mouse,Rat.
Application	IP, IHC, ICC, WB
Clonality	Polyclonal
Formulation	Rabbit IgG, 1mg/ml in PBS with 0.02% sodium azide, 50% glycerol, pH7.2
Storage Instructions	Store at -20°C for one year. For short term storage and frequent use, store at 4°C for up to one month. Avoid repeated freeze-thaw cycles.
Host	Rabbit
Uniprot ID	P21291

Technical Details

Immunogen	Synthesized peptide derived from internal of human CRP1.
Predicted Reactive Species	Chimpanzee, Drosophila, Macaque
Form	Liquid
Concentration	1 mg/ml
Purification	The antibody was affinity-purified from rabbit antiserum by affinity-chromatography using epitope-specific immunogen and the purity is > 95% (by SDS-PAGE).
Suggested Dilutions	Dilute the sample so that the expected range of concentrations fall within the detection range of this kit. If the expected range of concentration is unknown, a pilot test should be conducted to decide the optimal dilution ratio for your samples.

Some PubMed article(s) citing the expression level of this target are as follows:

Boster Bio's internal QC testing used:

WB: 1:500-1:1000

IHC: 1:50-1:200

ICC: 1:50-1:200

IP: 1:50-1:200

Anti-CSR1 Antibody (A06894-1) Images

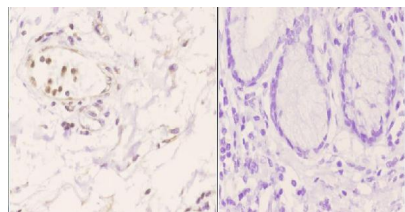


Figure 2. Immunohistochemistry validation of CSR1 using Anti-CSR1 Antibody (A06894-1).

Immunohistochemistry (IHC) analyzes of CSR1 pAb in paraffin-embedded human esophageal carcinoma tissue at 1:50, showing nucleus staining. Negative control (the right) Using PBS instead of primary antibody

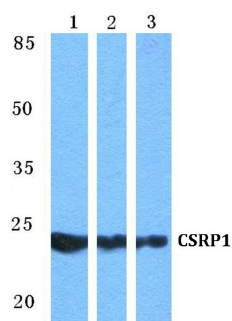


Figure 1. Western blotting validation for Anti-CSR1 Antibody A06894-1

Western blot (WB) analysis of CSR1 polyclonal antibody at 1:500 dilution

Lane1: HEK293T cell lysate

Lane2: Mouse heart tissue lysate

Lane3: Rat heart tissue lysate

Electrophoresis was performed on a SDS-PAGE gel. To determine SDS-PAGE gel concentration

Submit a product review to Biocompare.com

Submit a review of this product to Biocompare.com to receive a \$20 Amazon.com giftcard! Your reviews help your fellow scientists make the right decisions. Thank you for your contribution.



Anti-CSR1 Antibody