

Anti-Sema6A Antibody Picoband®

Catalog Number: A06967-1

About SEMA6A

SEMA6A belongs to a subfamily characterized by an extracellular semaphorin domain, a transmembrane domain, and a long cytoplasmic tail. Members of this class can repel sympathetic and dorsal root ganglion axons in vitro, consistent with a traditional role as guidance signals. However, the length of the cytoplasmic tail, which includes an EVL-binding site in SEMA6A and an Src-binding site in SEMA6B, suggests that these semaphorins may also function as receptors. SEMA6A is expressed in developing neural tissue and is required for proper development of the thalamocortical projection. SEMA6A directly links the Ena/VASP and the semaphorin protein families since the SEMA6A protein is capable of selective binding to the protein EVL (Ena/VASP-like protein).

Overview

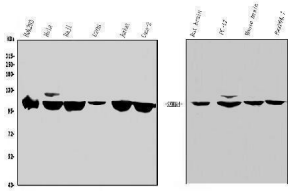
Product Name	Anti-Sema6A Antibody Picoband®
Reactive Species	Human, Mouse, Rat
Description	Boster Bio Anti-Sema6A Antibody Picoband® catalog # A06967-1. Tested in ELISA, Flow Cytometry, IHC, WB applications. This antibody reacts with Human, Mouse, Rat. The brand Picoband indicates this is a premium antibody that guarantees superior quality, high affinity, and strong signals with minimal background in Western blot applications. Only our best-performing antibodies are designated as Picoband, ensuring unmatched performance.
Application	ELISA, Flow Cytometry, IHC, WB
Clonality	Polyclonal
Formulation	Each vial contains 4mg Trehalose, 0.9mg NaCl, 0.2mg Na2HPO4, 0.01mg NaN3.
Storage Instructions	Store at -20°C for one year from date of receipt. After reconstitution, at 4°C for one month. It can also be aliquotted and stored frozen at -20°C for six months. Avoid repeated freeze-thaw cycles.
Host	Rabbit
Uniprot ID	Q9H2E6

Technical Details

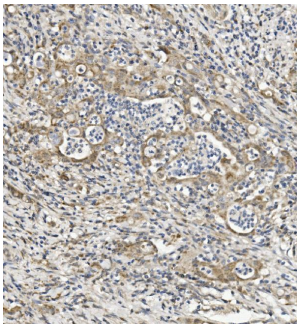
Immunogen	E.coli-derived human Sema6A recombinant protein (Position: H31-N306).
Recommended Detection Systems	Boster recommends Enhanced Chemiluminescent Kit with anti-Rabbit IgG (EK1002) for Western blot, and HRP Conjugated anti-Rabbit IgG Super Vision Assay Kit (SV0002-1) for IHC(P).
Cross Reactivity	No cross-reactivity with other proteins.
Isotype	Rabbit IgG
Form	Lyophilized

Concentration	Adding 0.2 ml of distilled water will yield a concentration of 500 ug/ml.
Purification	Immunogen affinity purified.
Suggested Dilutions	Western blot, 0.1-0.25ug/ml, Human, Mouse, Rat Immunohistochemistry (Paraffin-embedded Section), 0.5-1ug/ml, Human Flow Cytometry (Fixed), 1-3ug/1x10 ⁶ cells, Human ELISA, 0.1-0.5ug/ml, -

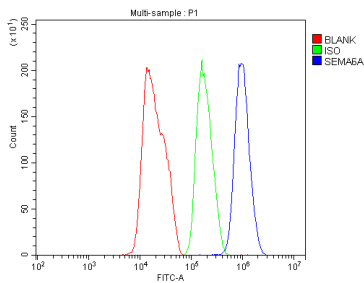
Anti-Sema6A Antibody Picoband® (A06967-1) Images



Western blot analysis of Sema6A using anti-Sema6A antibody (A06967-1). Electrophoresis was performed on a 5-20% SDS-PAGE gel at 70V (Stacking gel) / 90V (Resolving gel) for 2-3 hours. The sample well of each lane was loaded with 50ug of sample under reducing conditions. Lane 1: human HEK293 whole cell lysates, Lane 2: human HELA whole cell lysates, Lane 3: human Raji whole cell lysates, Lane 4: human U20S whole cell lysates, Lane 5: human Jurkat whole cell lysates, Lane 6: human CACO-2 whole cell lysates, Lane 7: rat brain tissue lysates, Lane 8: rat PC-12 whole cell lysates, Lane 9: mouse brain tissue lysates, Lane 10: mouse RAW264.7 whole cell lysates. After Electrophoresis, proteins were transferred to a Nitrocellulose membrane at 150mA for 50-90 minutes. Blocked the membrane with 5% Non-fat Milk/ TBS for 1.5 hour at RT. The membrane was incubated with rabbit anti-Sema6A antigen affinity purified polyclonal antibody (Catalog # A06967-1) at 0.25 ug/mL overnight at 4°C, then washed with TBS-0.1%Tween 3 times with 5 minutes each and probed with a goat anti-rabbit IgG-HRP secondary antibody at a dilution of 1:5000 for 1.5 hour at RT. The signal is developed using an Enhanced Chemiluminescent detection (ECL) kit (Catalog # EK1002) with Tanon 5200 system. A specific band was detected for Sema6A at approximately 114KD. The expected band size for Sema6A is at 114KD.



IHC analysis of Sema6A using anti-Sema6A antibody (A06967-1). Sema6A was detected in paraffin-embedded section of human rectal cancer tissue. Heat mediated antigen retrieval was performed in EDTA buffer (pH8.0, epitope retrieval solution). The tissue section was blocked with 10% goat serum. The tissue section was then incubated with 1ug/ml rabbit anti-Sema6A Antibody (A06967-1) overnight at 4°C. Biotinylated goat anti-rabbit IgG was used as secondary antibody and incubated for 30 minutes at 37°C. The tissue section was developed using Streptavidin-Biotin-Complex (SABC) (Catalog # SA1022) with DAB as the chromogen.



Flow Cytometry analysis of HEPG2 cells using anti-Sema6A antibody (A06967-1). Overlay histogram showing HEPG2 cells stained with A06967-1 (Blue line). To facilitate intracellular staining, cells were fixed with 4% paraformaldehyde and permeabilized with permeabilization buffer. The cells were blocked with 10% normal goat serum. And then incubated with rabbit anti-Sema6A Antibody (A06967-1, 1ug/1x10⁶ cells) for 30 min at 20°C. DyLight®488 conjugated goat anti-rabbit IgG (BA1127, 5-10ug/1x10⁶ cells) was used as secondary antibody for 30 minutes at 20°C. Isotype control antibody (Green line) was rabbit IgG (1ug/1x10⁶) used under the same conditions. Unlabelled sample without incubation with primary antibody and secondary antibody (Red line) was used as a blank

control.

Submit a product review to Biocompare.com

Submit a review of this product to Biocompare.com to receive a \$20 Amazon.com giftcard! Your reviews help your fellow scientists make the right decisions. Thank you for your contribution.



Anti-Sema6A Antibody

For Research Use Only. Not for use in diagnostic procedures.