

Anti-DRAGON/RGMB Antibody Picoband®

Catalog Number: A06984-1

About RGMB

Repulsive guidance molecule B (RGMB), also known as DRAGON (DRG11-responsive axonal guidance and outgrowth of neurite), is a bone morphogenetic protein (BMP) co-receptor of the repulsive guidance molecule family. In humans this protein is encoded by the RGMB gene. RGMB is a glycosylphosphatidylinositol (GPI)-anchored member of the repulsive guidance molecule family (see also RGMA and RGMC) and contributes to the patterning of the developing nervous system. There is a potential association between RGMs and cancer bone metastasis, as RGMs coordinate bone morphogenetic protein (BMP) signaling. RGMB may act as a negative regulator in vitro in breast cancer and prostate cancer through BMP signalling. Furthermore, aberrant expression of RGMs was indicated in breast cancer. The perturbed expression was associated with disease progression and poor prognosis.

Overview

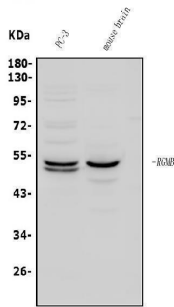
Product Name	Anti-DRAGON/RGMB Antibody Picoband®
Reactive Species	Human, Mouse
Description	Boster Bio Anti-DRAGON/RGMB Antibody Picoband® catalog # A06984-1. Tested in ELISA, Flow Cytometry, WB applications. This antibody reacts with Human, Mouse. The brand Picoband indicates this is a premium antibody that guarantees superior quality, high affinity, and strong signals with minimal background in Western blot applications. Only our best-performing antibodies are designated as Picoband, ensuring unmatched performance.
Application	ELISA, Flow Cytometry, WB
Clonality	Polyclonal
Formulation	Each vial contains 4mg Trehalose, 0.9mg NaCl, 0.2mg Na ₂ HPO ₄ , 0.01mg NaN ₃ .
Storage Instructions	Store at -20°C for one year from date of receipt. After reconstitution, at 4°C for one month. It can also be aliquotted and stored frozen at -20°C for six months. Avoid repeated freeze-thaw cycles.
Host	Rabbit
Uniprot ID	Q6NW40

Technical Details

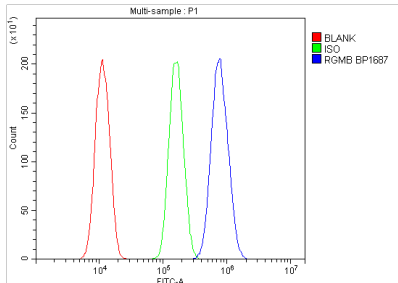
Immunogen	E.coli-derived human DRAGON/RGMB recombinant protein (Position: D47-R404).
Recommended Detection Systems	Boster recommends Enhanced Chemiluminescent Kit with anti-Rabbit IgG (EK1002) for Western blot.
Cross Reactivity	No cross-reactivity with other proteins.
Isotype	Rabbit IgG

Form	Lyophilized
Concentration	Adding 0.2 ml of distilled water will yield a concentration of 500 ug/ml.
Purification	Immunogen affinity purified.
Suggested Dilutions	Western blot, 0.25-0.5ug/ml, Human, Mouse Flow Cytometry (Fixed), 1-3ug/1x10 ⁶ cells, Human ELISA, 0.1-0.5ug/ml, -

Anti-DRAGON/RGMB Antibody Picoband® (A06984-1) Images



Western blot analysis of DRAGON/RGMB using anti-DRAGON/RGMB antibody (A06984-1). Electrophoresis was performed on a 5-20% SDS-PAGE gel at 70V (Stacking gel) / 90V (Resolving gel) for 2-3 hours. The sample well of each lane was loaded with 50ug of sample under reducing conditions. Lane 1: human PC-3 whole cell lysates, Lane 2: mouse brain tissue lysates. After Electrophoresis, proteins were transferred to a Nitrocellulose membrane at 150mA for 50-90 minutes. Blocked the membrane with 5% Non-fat Milk/TBS for 1.5 hour at RT. The membrane was incubated with rabbit anti-DRAGON/RGMB antigen affinity purified polyclonal antibody (Catalog # A06984-1) at 0.5 ug/mL overnight at 4°C, then washed with TBS-0.1%Tween 3 times with 5 minutes each and probed with a goat anti-rabbit IgG-HRP secondary antibody at a dilution of 1:5000 for 1.5 hour at RT. The signal is developed using an Enhanced Chemiluminescent detection (ECL) kit (Catalog # EK1002) with Tanon 5200 system. A specific band was detected for DRAGON/RGMB at approximately 48KD. The expected band size for DRAGON/RGMB is at 48KD.



Flow Cytometry analysis of A431 cells using anti-DRAGON/RGMB antibody (A06984-1). Overlay histogram showing A431 cells stained with A06984-1 (Blue line). To facilitate intracellular staining, cells were fixed with 4% paraformaldehyde and permeabilized with permeabilization buffer. The cells were blocked with 10% normal goat serum. And then incubated with rabbit anti-DRAGON/RGMB Antibody (A06984-1, 1ug/1x10⁶ cells) for 30 min at 20°C. DyLight®488 conjugated goat anti-rabbit IgG (BA1127, 5-10ug/1x10⁶ cells) was used as secondary antibody for 30 minutes at 20°C. Isotype control antibody (Green line) was rabbit IgG (1ug/1x10⁶) used under the same conditions. Unlabelled sample without incubation with primary antibody and secondary antibody (Red line) was used as a blank control.

Submit a product review to [Biocompare.com](https://www.biocompare.com)

Submit a review of this product to [Biocompare.com](https://www.biocompare.com) to receive a \$20 Amazon.com giftcard! Your reviews help your fellow scientists make the right decisions. Thank you for your contribution.



Anti-DRAGON/RGMB Antibody

For Research Use Only. Not for use in diagnostic procedures.