

## Anti-Periphilin 1 PPHLN1 Antibody

Catalog Number: A06996-1

### About PPHLN1

Appears to have a function in striated muscle development and regeneration.

### Overview

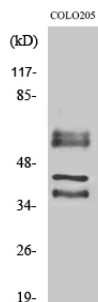
Product Name	Anti-Periphilin 1 PPHLN1 Antibody
Reactive Species	Human, Mouse
Description	Boster Bio Anti-Periphilin 1 PPHLN1 Antibody catalog # A06996-1. Tested in ELISA, IHC-P, WB applications. This antibody reacts with Human, Mouse.
Application	ELISA, IHC-P, WB
Clonality	Polyclonal Mix
Formulation	Liquid in PBS containing 50% glycerol, 0.5% BSA and 0.02% sodium azide.
Storage Instructions	Store at -20°C for one year. For short term storage and frequent use, store at 4°C for up to one month. Avoid repeated freeze-thaw cycles.
Host	Rabbit
Uniprot ID	Q8NEY8

### Technical Details

Immunogen	Synthesized peptide derived from the Internal region of human Periphilin 1. at AA range: 40-120
Predicted Reactive Species	Bovine, Equine, Guinea Pig
Isotype	IgG
Form	Liquid
Concentration	1 mg/ml
Purification	The antibody was affinity-purified from rabbit antiserum by affinity-chromatography using a epitope-specific immunogen.
Suggested Dilutions	Dilute the sample so that the expected range of concentrations fall within the detection range of this kit. If the expected range of concentration is unknown, a pilot test should be conducted to decide the optimal dilution ratio for your samples. Some PubMed article(s) citing the expression level of this target are as follows: Boster Bio's internal QC testing used: WB 1:500-1:2000

	IHC 1:100-1:300 ELISA 1:5000
--	---------------------------------

## Anti-Periphilin 1 PPHLN1 Antibody (A06996-1) Images



Western Blot (WB) analysis of specific cells using Periphilin 1 Polyclonal antibody.

### Submit a product review to Biocompare.com

Submit a review of this product to Biocompare.com to receive a \$20 Amazon.com giftcard! Your reviews help your fellow scientists make the right decisions. Thank you for your contribution.



Anti-Periphilin 1 PPHLN1 Antibody