

Anti-ADAMTS7 Antibody

Catalog Number: A07001

About ADAMTS7

Ribosomes, the organelles that catalyze protein synthesis, consist of a small 40S subunit and a large 60S subunit. Together these subunits are composed of 4 RNA species and approximately 80 structurally distinct proteins. This gene encodes a ribosomal protein that is a component of the 60S subunit. The protein belongs to the L30E family of ribosomal proteins. It is located in the cytoplasm. This gene is co-transcribed with the U72 small nucleolar RNA gene, which is located in its fourth intron. As is typical for genes encoding ribosomal proteins, there are multiple processed pseudogenes of this gene dispersed through the genome.

Beausoleil S.A., Nat. Biotechnol. 24:1285-1292(2006).

Yoshihama M., Genome Res. 12:379-390(2002).

The MGC Project Team; Genome Res. 14:2121-2127(2004).

Overview

Product Name	Anti-ADAMTS7 Antibody
Reactive Species	Human
Description	Boster Bio Anti-ADAMTS7 Antibody catalog # A07001. Tested in WB applications. This antibody reacts with Human.
Application	WB
Clonality	Polyclonal
Formulation	Rabbit IgG, 1mg/ml in PBS with 0.02% sodium azide, 50% glycerol, pH7.2
Storage Instructions	Store at -20°C for one year. For short term storage and frequent use, store at 4°C for up to one month. Avoid repeated freeze-thaw cycles.
Host	Rabbit
Uniprot ID	Q9UKP4

Technical Details

Immunogen	Synthesized peptide derived from human PTPRU protein.
Predicted Reactive Species	Chimpanzee, Drosophila, Macaque
Isotype	IgG
Form	Liquid
Concentration	1 mg/ml

Purification	The antibody was affinity-purified from rabbit antiserum by affinity-chromatography using epitope-specific immunogen and the purity is > 95% (by SDS-PAGE).
Suggested Dilutions	<p>Dilute the sample so that the expected range of concentrations fall within the detection range of this kit.</p> <p>If the expected range of concentration is unknown, a pilot test should be conducted to decide the optimal dilution ratio for your samples.</p> <p>Some PubMed article(s) citing the expression level of this target are as follows:</p> <p>Boster Bio's internal QC testing used:</p> <p>WB: 1:1000-1:2000</p>

Anti-ADAMTS7 Antibody (A07001) Images

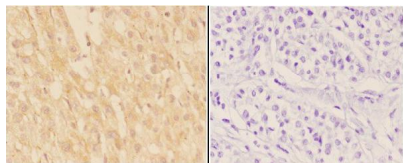


Figure 2. Immunohistochemistry validation of ADAMTS7 using Anti-ADAMTS7 Antibody (A07001).

Immunohistochemistry (IHC) analyzes of ADAMTS7 pAb in paraffin-embedded human liver carcinoma tissue at 1:50

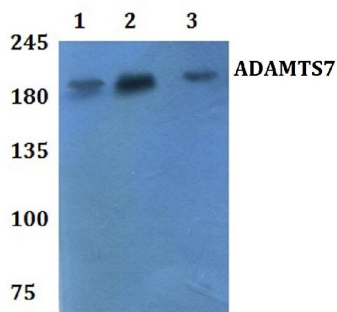


Figure 1. Western blotting validation for Anti-ADAMTS7 Antibody A07001

Western blot (WB) analysis of ADAMTS7 polyclonal antibody at 1:500 dilution Lane1:HEK293T whole cell lysate Lane2:RAW264.7 whole cell lysate Lane3:H9C2 whole cell lysate

Electrophoresis was performed on a SDS-PAGE gel. To determine SDS-PAGE gel concentration

Submit a product review to Biocompare.com

Submit a review of this product to Biocompare.com to receive a \$20 Amazon.com giftcard! Your reviews help your fellow scientists make the right decisions. Thank you for your contribution.



Anti-ADAMTS7 Antibody