

## Anti-LASS6 CERS6 Antibody

Catalog Number: A07033

### About CERS6

The LASS (longevity assurance homolog) family members represent a subgroup of the homeobox gene family and are highly conserved from yeasts to mammals. Six members of this family of proteins have been characterized (LASS1-6) and all are involved in ceramide synthesis during cell growth regulation and cancer differentiation. Like the highly homologous LASS5, LASS6 is also an endoplasmic reticulum, multi-pass membrane protein. LASS6 is also involved in the synthesis of C14, C16 and C18-ceramide, but shows a preference for unsaturated fatty acids. LASS6 is broadly expressed in a wide range of tissues and microarray data suggests that it may play a role in cancer differentiation and early embryonic development.

### Overview

Product Name	Anti-LASS6 CERS6 Antibody
Reactive Species	Human, Mouse, Rat
Description	Boster Bio Anti-LASS6 CERS6 Antibody (Catalog # A07033). Tested in ELISA, WB, IHC-P, IF applications. This antibody reacts with Human, Mouse, Rat.
Application	ELISA, IF, IHC-P, WB
Clonality	Polyclonal
Formulation	LASS6 Antibody is supplied in PBS containing 0.02% sodium azide.
Storage Instructions	Antibody can be stored at 4°C up to one year. Antibodies should not be exposed to prolonged high temperatures.
Host	Rabbit
Uniprot ID	Q6ZMG9

### Technical Details

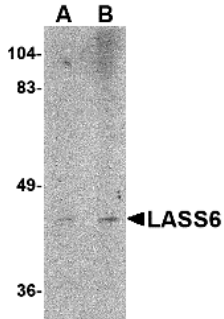
Immunogen	LASS6 antibody was raised against a 13 amino acid synthetic peptide near the carboxy terminus of the human LASS6. The immunogen is located within the last 50 amino acids of LASS6.
Predicted Reactive Species	Bovine
Cross Reactivity	At least two isoforms of LASS6 are known to exist. This antibody is predicted not to cross-react with LASS5.
Isotype	IgG
Form	Liquid
Concentration	1 mg/mL
Purification	LASS6 Antibody is affinity chromatography purified via peptide column.

Suggested Dilutions

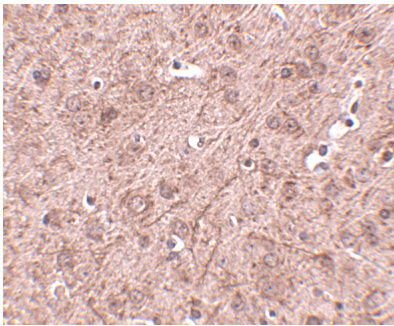
LASS6 antibody can be used for detection of LASS6 by Western blot at 1 - 2 ug/mL. Antibody can also be used for immunohistochemistry starting at 2.5 ug/mL. For immunofluorescence start at 20 ug/mL.

Antibody validated: Western Blot in rat samples; Immunohistochemistry in mouse samples and Immunofluorescence in mouse samples. All other applications and species not yet tested. Optimal dilutions for each application should be determined by the researcher.

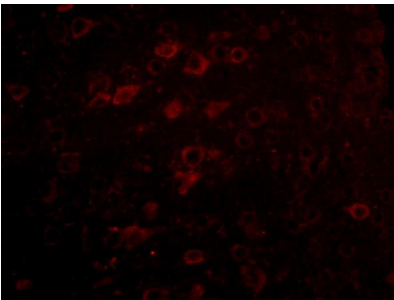
## Anti-LASS6 CERS6 Antibody (A07033) Images



Western blot analysis of LASS6 in rat brain tissue lysate with LASS6 antibody at (A) 1 and (B) 2 ug/mL.



Immunohistochemistry of LASS6 in mouse brain tissue with LASS6 antibody at 2.5 ug/mL.



Immunofluorescence of LASS6 in Mouse Brain cells with LASS6 antibody at 5 ug/mL.

### Submit a product review to [Biocompare.com](https://www.biocompare.com)

Submit a review of this product to [Biocompare.com](https://www.biocompare.com) to receive a \$20 Amazon.com giftcard! Your reviews help your fellow scientists make the right decisions. Thank you for your contribution.



Anti-LASS6 CERS6 Antibody

For Research Use Only. Not for use in diagnostic procedures.