

Anti-UBE2J1/Ubc6E Antibody

Catalog Number: A07059

About UBE2J1

This antibody is suitable for Cancer, Immunology and Nuclear Signaling research. Ube2j1 and Ube2j2 are homologs of the yeast ubiquitin-conjugating enzyme UBC6, which catalyzes the covalent attachment of ubiquitin to other proteins. These proteins constitute a distinct family of ubiquitin-conjugating enzymes sharing a conserved non-canonical active site sequence and a C-terminal transmembrane domain. By analogy with yeast UBC6, Ube2j1 and Ube2j2 are localized to the endoplasmic reticulum and seem to function in the selective degradation of misfolded membrane proteins and in general mediation of the stress response.

Overview

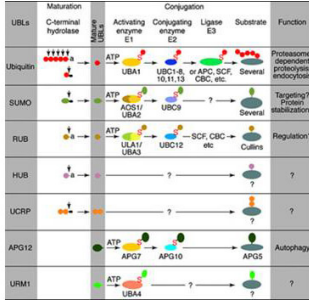
Product Name	Anti-UBE2J1/Ubc6E Antibody
Reactive Species	Human
Description	Boster Bio Anti-UBE2J1/Ubc6E Antibody (Catalog # A07059). Tested in ELISA, WB applications. This antibody reacts with Human.
Application	ELISA, IP, WB
Clonality	Polyclonal
Formulation	0.02 M Potassium Phosphate, 0.15 M Sodium Chloride, pH 7.2, 0.01% (w/v) Sodium Azide
Storage Instructions	Store vial at -20°C prior to opening. Aliquot contents and freeze at -20°C or below for extended storage. Avoid cycles of freezing and thawing. Centrifuge product if not completely clear after standing at room temperature. This product is stable for several weeks at 4°C as an undiluted liquid. Dilute only prior to immediate use. Expiration date is one (1) year from date of opening. (Ship on dry ice.)
Host	Rabbit
Uniprot ID	Q9Y385

Technical Details

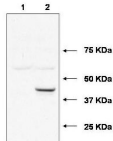
Immunogen	This affinity purified antibody was prepared from whole rabbit serum produced by repeated immunizations with a synthetic peptide corresponding to residues near the amino terminus of the human Ube2j1 protein.
Predicted Reactive Species	Chimpanzee, Drosophila, Macaque
Isotype	IgG
Form	Liquid (sterile filtered)
Concentration	0.71 mg/mL by UV absorbance at 280 nm

Purification	This affinity purified antibody is directed against human Ube2j1 protein. The product was affinity purified from monospecific antiserum by immunoaffinity chromatography. A BLAST analysis was used to suggest cross-reactivity with Ube2j1 protein from human, mouse and rat based on 100% homology with the immunizing sequence. Reactivity against homologues from other sources is not known.
Suggested Dilutions	ELISA: 1:1,000 - 1:5,000 IP: 1-2 µg WB: 1:200 - 1:2,000 This affinity purified antibody has been tested for use in ELISA, western blotting and immunoprecipitation. Specific conditions for reactivity should be optimized by the end user. Expect a band approximately 35-40 kDa in size corresponding to Ube2j1 protein by western blotting in the appropriate cell lysate or extract.

Anti-UBE2J1/Ubc6E Antibody (A07059) Images



Most modifiers mature by proteolytic processing from inactive precursors ("a" = amino acid). Arrowheads point to the cleavage sites. Ubiquitin is expressed either as polyubiquitin or as a fusion with ribosomal proteins. Conjugation requires activating (E1) and conjugating (E2) enzymes that form thioesters (S) with the modifiers. Modification of cullins by RUB involves SCF(SKP1/cullin-1/F-box protein)/CBC(cullin-2/elonginB/elonginC)-like E3 enzymes that are also involved in ubiquitination. In contrast to ubiquitin, the UBLs do not seem to form multi-UBL chains. UCRP(IGS15) resembles two ubiquitin moieties linked head-to-tail. Whether HUB1 functions as a modifier is currently unclear. APG12 and URM1 are distinct from the other modifiers because they are unrelated in sequence to ubiquitin. (From Jentsch & Pyrowolakis (2000); see references below.)



Western blot using Boster's affinity purified anti-Ube2j1 antibody shows detection of Ube2j1 in 293 cells over-expressing Myc-Ube2j1 (Lane 2). Lane 1 contains lysate from mock-transfected 293 cells. Personal Communication, A. Weissman & T. Shang, CCR-NCI, Frederick, MD

Submit a product review to Biocompare.com

Submit a review of this product to Biocompare.com to receive a \$20 Amazon.com giftcard! Your reviews help your fellow scientists make the right decisions. Thank you for your contribution.



Anti-UBE2J1/Ubc6E Antibody

For Research Use Only. Not for use in diagnostic procedures.