

Anti-APC10 ANAPC10 Antibody

Catalog Number: A07065

Introduction

CD3epsilon is a 20kD chain, which together with CD3lambda, CD3delta, and CD3zeta, and a T cell receptor (alpha/beta or gamma/delta) form the CD3/T-cell receptor complex. It is a specific marker for T lymphocytes, NK T cells, and some thymocytes. Crosslinking of TCR initiates an intracellular signaling cascade resulting in cellular activation and proliferation. The OKT3 antibody has been reported to have potent immunosuppressive properties in vivo and has been proved effective in the treatment of renal, heart, and liver allograft rejection.

This antibody is routinely tested by flow cytometric analysis. Flow cytometry and other applications were tested during antibody development or are reported in the literature.

Application Information

Each lot of this antibody has been quality control tested by flow cytometric analysis of human PBMCs. For flow cytometric staining, the recommended use of this antibody is $\leq 0.5\mu\text{g}$ per 1×10^6 cells in $100\mu\text{l}$ of staining volume followed by a secondary fluorescent conjugated anti-mouse antibody. However, it is strongly suggested that the antibody reactivity be empirically titrated for optimal performance in the application of interest.

About ANAPC10

Cell cycle regulated protein ubiquitination and degradation within subcellular domains is thought to be essential for the normal progression of mitosis. APC10 is a highly conserved component of the anaphase promoting complex/cyclosome (APC/C), a cell cycle-regulated E3 ubiquitin ligase that controls progression through mitosis and the G1 phase of the cell cycle. APC/C is responsible for degrading anaphase inhibitors, mitotic cyclins, and spindle-associated proteins ensuring that events of mitosis take place in proper sequence. The individual APC/C components mRNA and protein levels are expressed at approximately the same levels in most tissues and cell lines, suggesting that they perform their functions as part of a complex. It has been suggested that APC10 plays a role to regulate the binding of specific substrates to the APC/C complex, similar to that of coactivators.

Overview

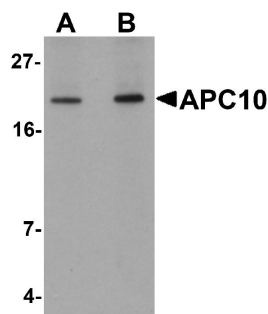
Product Name	Anti-APC10 ANAPC10 Antibody
Reactive Species	Human, Mouse, Rat
Description	Boster Bio Anti-APC10 ANAPC10 Antibody (Catalog # A07065). Tested in ELISA, WB, IHC-P, IF applications. This antibody reacts with Human, Mouse, Rat.
Conjugate	Biotin
Application	ELISA, IF, IHC-P, WB
Clonality	Polyclonal SK7
Formulation	APC10 Antibody is supplied in PBS containing 0.02% sodium azide.

Storage Instructions	APC10 antibody can be stored at 4°C for three months and -20°C, stable for up to one year. Avoid repeated freeze-thaw cycles. Antibodies should not be exposed to prolonged high temperatures.
Host	Rabbit
Uniprot ID	Q9UM13

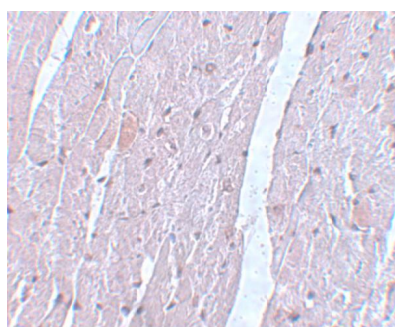
Technical Details

Immunogen	APC10 antibody was raised against a 16 amino acid synthetic peptide near the center of human APC10. The immunogen is located within amino acids 60 - 110 of APC10.
Predicted Reactive Species	Bovine
Cross Reactivity	At least two isoforms of LASS6 are known to exist. This antibody is predicted not to cross-react with LASS5.
Isotype	IgG
Form	Liquid
Concentration	1 mg/mL
Purification	APC10 Antibody is affinity chromatography purified via peptide column.
Suggested Dilutions	<p>Dilute the sample so that the expected range of concentrations fall within the detection range of this kit.</p> <p>If the expected range of concentration is unknown, a pilot test should be conducted to decide the optimal dilution ratio for your samples.</p> <p>Some PubMed article(s) citing the expression level of this target are as follows:</p> <p>Boster Bio's internal QC testing used:</p> <p>APC10 antibody can be used for detection of APC10 by Western blot at 1 - 2 ug/mL. Antibody can also be used for immunohistochemistry starting at 5 ug/mL. For immunofluorescence start at 20 ug/mL.</p> <p>Antibody validated: Western Blot in mouse samples; Immunohistochemistry in mouse samples and Immunofluorescence in mouse samples. All other applications and species not yet tested. Optimal dilutions for each application should be determined by the researcher.</p>

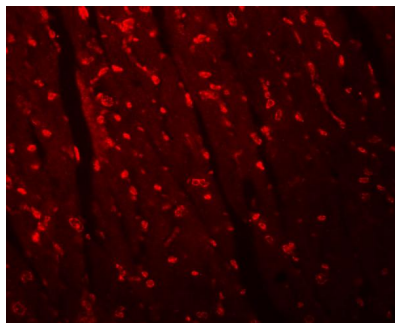
Anti-APC10 ANAPC10 Antibody (A07065) Images



Western blot analysis of APC10 in mouse heart tissue lysate with APC10 antibody at (A) 1 and (B) 2 ug/mL.



Immunohistochemistry of APC10 in mouse heart tissue with APC10 antibody at 5 ug/mL.



Immunofluorescence of APC10 in mouse heart tissue with APC10 antibody at 20 ug/mL.

Submit a product review to Biocompare.com

Submit a review of this product to Biocompare.com to receive a \$20 Amazon.com giftcard! Your reviews help your fellow scientists make the right decisions. Thank you for your contribution.



Anti-APC10 ANAPC10 Antibody