

Anti-APC10 ANAPC10 Antibody

Catalog Number: A07065-1

About ANAPC10

APC (Anaphase-Promoting Complex or Cyclosome) is a ubiquitin ligase which specifically targets mitotic regulatory factors such as Pds1/Cut2 and cyclin B. It was found that APC10/Doc1 is localized in centrosomes and mitotic spindles throughout mitosis, while it is also localized in kinetochores from prophase to anaphase and in mid-body in telophase and cytokinesis. These results strongly support the notion that human APC10/Doc1 may be one of the APC core subunits rather than the transiently associated regulatory factor.

Overview

Product Name	Anti-APC10 ANAPC10 Antibody
Reactive Species	Human
Description	Boster Bio Anti-APC10 ANAPC10 Antibody (Catalog # A07065-1). Tested in ELISA, WB applications. This antibody reacts with Human.
Application	ELISA, IP, IHC, WB
Clonality	Polyclonal
Formulation	0.02 M Potassium Phosphate, 0.15 M Sodium Chloride, pH 7.2, 0.01% (w/v) Sodium Azide
Storage Instructions	Store vial at -20°C prior to opening. Aliquot contents and freeze at -20°C or below for extended storage. Avoid cycles of freezing and thawing. Centrifuge product if not completely clear after standing at room temperature. This product is stable for several weeks at 4°C as an undiluted liquid. Dilute only prior to immediate use. Expiration date is one (1) year from date of opening. (Ship on dry ice.)
Host	Rabbit
Uniprot ID	Q9UM13

Technical Details

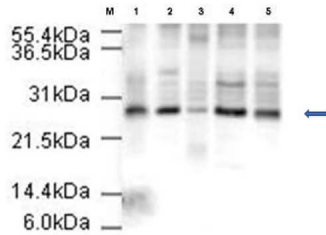
Immunogen	This affinity purified antibody was prepared from whole rabbit serum produced by repeated immunizations with a synthetic peptide corresponding to amino acids near the amino terminus of human APC10.
Predicted Reactive Species	Canine, Chimpanzee, Orangutan
Isotype	IgG
Form	Liquid (sterile filtered)
Concentration	1.50 mg/mL by UV absorbance at 280 nm
Purification	This is an affinity purified antibody produced by immunoaffinity chromatography using the

immunizing peptide after immobilization to a solid phase.

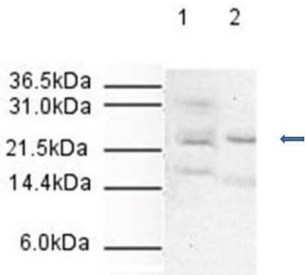
Suggested Dilutions

ELISA: 1:15,000 - 1:80,000
IHC: 1:250 - 1:1,000
IP: 1:100
WB: 1:500 - 1:1,500
This affinity purified antibody has been tested for use in ELISA against the immunizing peptide and by western blotting against various cell lysates. Reactivity in other immunoassays is unknown.

Anti-APC10 ANAPC10 Antibody (A07065-1) Images



Western Blot of Affinity Purified Rabbit anti-APC10. Lane 1: HeLa nuclear extract . Lane 2: HeLa whole cell lysate . Lane 3: A431 whole cell lysate . Lane 4: Jurkat whole cell lysate . Lane 5: 293 whole cell lysate . All lanes contain 20 µg of lysate or extract. Primary Antibody was used at a 1:500 dilution at room temperature for 1 h to detect human APC10 at ~26 kDa (predicted molecular weight is 21 kDa). After subsequent washing, a 1:5,000 dilution of HRP conjugated Gt-a-Rabbit IgG was used for visualization. Exposure time was 4 min.



Western Blot of Affinity Purified Rabbit Anti-APC10. Lane 1: HeLa whole cell lysate . Lane 2: HeLa Nuclear lysate . Approximately 20 µg of each lysate was loaded onto a 10% SDS-PAGE gel. Primary Antibody was used at a 1:500 dilution at room temperature for 1 h. After subsequent washing, a 1:2,000 dilution of HRP conjugated Gt-a-Rabbit IgG was used for visualization. Exposure time was 5 min. The expected molecular weight of human APC10 is 21 kDa.

Submit a product review to Biocompare.com

Submit a review of this product to Biocompare.com to receive a \$20 Amazon.com giftcard! Your reviews help your fellow scientists make the right decisions. Thank you for your contribution.



Anti-APC10 ANAPC10 Antibody

For Research Use Only. Not for use in diagnostic procedures.