

## Anti-CHMP1B Antibody

Catalog Number: A07069

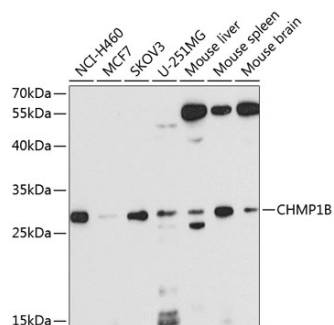
### Overview

Product Name	Anti-CHMP1B Antibody
Reactive Species	Human, Mouse, Rat
Description	Boster Bio Anti-CHMP1B Antibody catalog # A07069. Tested in WB applications. This antibody reacts with Human,Mouse,Rat.
Application	WB
Clonality	Polyclonal
Formulation	Rabbit IgG, 1mg/ml in PBS with 0.02% sodium azide, 50% glycerol, pH7.2
Storage Instructions	Store at -20°C for one year. For short term storage and frequent use, store at 4°C for up to one month. Avoid repeated freeze-thaw cycles.
Host	Rabbit
Uniprot ID	Q7LBR1

### Technical Details

Immunogen	Recombinant fusion protein of human CHMP1B(NP_065145.2).
Isotype	IgG
Form	Liquid
Concentration	0.71 mg/mL by UV absorbance at 280 nm
Purification	The antibody was affinity-purified from rabbit antiserum by affinity-chromatography using epitope-specific immunogen and the purity is > 95% (by SDS-PAGE).
Suggested Dilutions	WB: 1:500-1:2000

## Anti-CHMP1B Antibody (A07069) Images



Western blot analysis of extracts of various cell lines, using CHMP1B antibody at 1:1000 dilution. Secondary antibody: HRP Goat Anti-Rabbit IgG at 1:10000 dilution. Lysates/proteins: 25ug per lane. Blocking buffer: 3% nonfat dry milk in TBST. Detection: ECL Basic Kit. Exposure time: 90s.

## Submit a product review to Biocompare.com

Submit a review of this product to Biocompare.com to receive a \$20 Amazon.com giftcard! Your reviews help your fellow scientists make the right decisions. Thank you for your contribution.



### Anti-CHMP1B Antibody

For Research Use Only. Not for use in diagnostic procedures.