

## Anti-IkB-Epsilon (phospho-S22) NFKBIE Antibody

Catalog Number: A07073S22

### Overview

Product Name	Anti-IkB-Epsilon (phospho-S22) NFKBIE Antibody
Reactive Species	Human, Mouse, Rat
Description	Boster Bio Anti-IkB-Epsilon (phospho-S22) NFKBIE Antibody catalog # A07073S22. Tested in IHC applications. This antibody reacts with Human, Mouse, Rat.
Application	IHC
Clonality	Polyclonal
Formulation	Rabbit IgG, 1mg/ml in PBS with 0.02% sodium azide, 50% glycerol, pH7.2
Storage Instructions	Store at -20°C for one year. For short term storage and frequent use, store at 4°C for up to one month. Avoid repeated freeze-thaw cycles.
Host	Rabbit
Uniprot ID	O00221

### Technical Details

Immunogen	Synthetic phosphopeptide derived from human IκB-epsilon around the phosphorylation site of Serine 22.
Isotype	IgG
Form	Liquid
Concentration	1 mg/ml
Purification	The antibody was affinity-purified from rabbit antiserum by affinity-chromatography using epitope-specific immunogen and the purity is > 95% (by SDS-PAGE).
Suggested Dilutions	IHC: 1:50-1:200

## Anti-IkB-Epsilon (phospho-S22) NFKBIE Antibody (A07073S22) Images

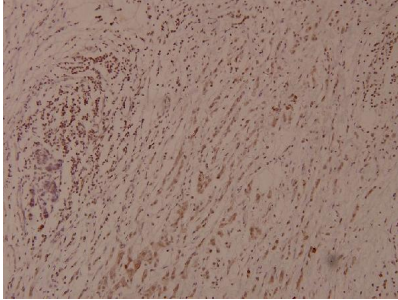


Figure 1. Immunohistochemistry validation of NFKBIE using Anti-IkB-Epsilon (phospho-S22) NFKBIE Antibody (A07073S22).

Immunohistochemistry (IHC) analyzes of p-IkB-epsilon (S22) pAb in paraffin-embedded human breast carcinoma tissue at 1:100.

For more protocol information of IHC

### Submit a product review to Biocompare.com

Submit a review of this product to Biocompare.com to receive a \$20 Amazon.com giftcard! Your reviews help your fellow scientists make the right decisions. Thank you for your contribution.



Anti-IkB-Epsilon (phospho-S22) NFKBIE Antibody