

## Anti-KLF13 (Acetyl-K166) Antibody

Catalog Number: A07076

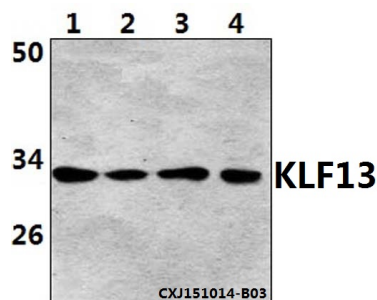
### Overview

Product Name	Anti-KLF13 (Acetyl-K166) Antibody
Reactive Species	Human, Mouse, Rat
Description	Boster Bio Anti-KLF13 (Acetyl-K166) Antibody catalog # A07076. Tested in WB applications. This antibody reacts with Human,Mouse,Rat.
Application	WB
Clonality	Polyclonal
Formulation	Rabbit IgG, 1mg/ml in PBS with 0.02% sodium azide, 50% glycerol, pH7.2
Storage Instructions	Store at -20°C for one year. For short term storage and frequent use, store at 4°C for up to one month. Avoid repeated freeze-thaw cycles.
Host	Rabbit
Uniprot ID	Q9Y2Y9

### Technical Details

Immunogen	Synthetic peptide including acetyl-lysine 166 of KLF13.
Isotype	IgG
Form	Liquid
Concentration	1 mg/ml
Purification	The antibody was affinity-purified from rabbit antiserum by affinity-chromatography using epitope-specific immunogen and the purity is > 96% (by SDS-PAGE).
Suggested Dilutions	WB: 1:500-1:1000

## Anti-KLF13 (Acetyl-K166) Antibody (A07076) Images



Western blot (WB) analysis of KLF13 (Acetyl-K166) polyclonal antibody at 1:500 dilution. Lane 1: Hela whole cell lysate (40ug), Lane 2: Jurkat whole cell lysate (40ug), Lane 3: NIH-3T3 whole cell lysate (40ug), Lane 4: PC12 whole cell lysate (40ug).

### Submit a product review to Biocompare.com

Submit a review of this product to Biocompare.com to receive a \$20 Amazon.com giftcard! Your reviews help your fellow scientists make the right decisions. Thank you for your contribution.



Anti-KLF13 (Acetyl-K166) Antibody

For Research Use Only. Not for use in diagnostic procedures.