

Anti-Integrin alpha-E ITGAE Antibody

Catalog Number: A07091

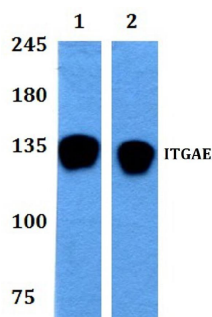
Overview

Product Name	Anti-Integrin alpha-E ITGAE Antibody
Reactive Species	Human, Rat
Description	Boster Bio Anti-Integrin alpha-E ITGAE Antibody catalog # A07091. Tested in WB applications. This antibody reacts with Human,Rat.
Application	WB
Clonality	Polyclonal
Formulation	Rabbit IgG, 1mg/ml in PBS with 0.02% sodium azide, 50% glycerol, pH7.2
Storage Instructions	Store at -20°C for one year. For short term storage and frequent use, store at 4°C for up to one month. Avoid repeated freeze-thaw cycles.
Host	Rabbit
Uniprot ID	P38570

Technical Details

Immunogen	A synthetic peptide corresponding to residues in Human ITGAE.
Isotype	IgG
Form	Liquid
Concentration	1 mg/ml
Purification	The antibody was affinity-purified from rabbit antiserum by affinity-chromatography using epitope-specific immunogen and the purity is > 95% (by SDS-PAGE).
Suggested Dilutions	WB: 1:500-1:1000

Anti-Integrin alpha-E ITGAE Antibody (A07091) Images



Western blot (WB) analysis of ITGAE polyclonal antibody at 1:500 dilution
Lane1:HEK293T whole cell lysate
Lane2:H92C2 whole cell lysate

1 Publications Citing This Product

1. PubMed ID: 26688104, BAFF and its receptors involved in the inflammation progress in adjuvant induced arthritis rats

Visit bosterbio.com/anti-integrin-alpha-e-itgae-antibody-a07091-boster.html to see all 1 publications.

Submit a product review to Biocompare.com

Submit a review of this product to Biocompare.com to receive a \$20 Amazon.com giftcard! Your reviews help your fellow scientists make the right decisions. Thank you for your contribution.



Anti-Integrin alpha-E ITGAE Antibody

For Research Use Only. Not for use in diagnostic procedures.