

## Anti-CD103/Itgae Antibody

Catalog Number: A07091-2

### About Itgae

ITGAE(INTEGRIN, ALPHA-E), also known as CD103, is an integrin protein that in human is encoded by the ITGAE gene. The ITGAE gene is mapped to chromosome 17p13 by inclusion within a BAC contig. ITGAE is expressed widely on intraepithelial lymphocyte(IEL) T cells(both alphabeta T cells and gammadelta T cells) and on some peripheral regulatory T cells(Tregs) which is important for decreasing the immune response and appears to play a crucial role in the prevention of autoimmune diseases. ITGAE shares overall homology with other alpha integrins but has a unique 55-amino acid "extra" region located just N-terminal to the I domain that contains 18 consecutive charged residues and a proteolytic cleavage site.

### Overview

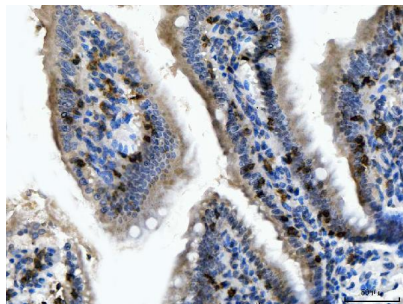
Product Name	Anti-CD103/Itgae Antibody
Reactive Species	Mouse, Rat
Description	Boster Bio Anti-CD103/Itgae Antibody catalog # A07091-2. Tested in ELISA, IHC applications. This antibody reacts with Mouse, Rat.
Application	ELISA, IHC
Clonality	Polyclonal
Formulation	Each vial contains 4 mg Trehalose, 0.9 mg NaCl, 0.2 mg Na2HPO4.
Storage Instructions	At -20°C for one year from date of receipt. After reconstitution, at 4°C for one month. It can also be aliquotted and stored frozen at -20°C for six months. Avoid repeated freezing and thawing.
Host	Rabbit
Uniprot ID	Q60677

### Technical Details

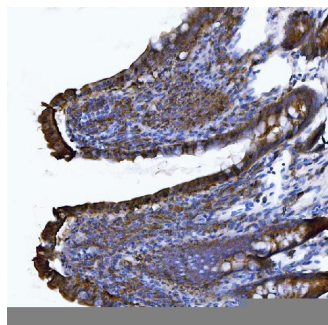
Immunogen	E.coli-derived mouse CD103/Itgae recombinant protein (Position: F20-E1061).
Recommended Detection Systems	Boster recommends HRP Conjugated anti-Rabbit IgG Super Vision Assay Kit (SV0002-1) for IHC(P).
Cross Reactivity	No cross-reactivity with other proteins.
Isotype	Rabbit IgG
Form	Lyophilized
Concentration	Adding 0.2 ml of distilled water will yield a concentration of 500 ug/ml.
Purification	Immunogen affinity purified.
Suggested Dilutions	Immunohistochemistry(Paraffin-embedded Section), 2-5 ug/ml, Mouse, Rat

	ELISA, 0.1-0.5 ug/ml, -
--	-------------------------

## Anti-CD103/Ilgae Antibody (A07091-2) Images



IHC analysis of CD103/Ilgae using anti-CD103/Ilgae antibody (A07091-2). CD103/Ilgae was detected in a paraffin-embedded section of mouse colon tissue. Heat mediated antigen retrieval was performed in EDTA buffer (pH 8.0, epitope retrieval solution). The tissue section was blocked with 10% goat serum. The tissue section was then incubated with 2 ug/ml rabbit anti-CD103/Ilgae Antibody (A07091-2) overnight at 4°C. Peroxidase Conjugated Goat Anti-rabbit IgG was used as secondary antibody and incubated for 30 minutes at 37°C. The tissue section was developed using HRP Conjugated Rabbit IgG Super Vision Assay Kit (Catalog # SV0002) with DAB as the chromogen.



IHC analysis of CD103/Ilgae using anti-CD103/Ilgae antibody (A07091-2). CD103/Ilgae was detected in a paraffin-embedded section of rat colon tissue. Heat mediated antigen retrieval was performed in EDTA buffer (pH 8.0, epitope retrieval solution). The tissue section was blocked with 10% goat serum. The tissue section was then incubated with 2 ug/ml rabbit anti-CD103/Ilgae Antibody (A07091-2) overnight at 4°C. Peroxidase Conjugated Goat Anti-rabbit IgG was used as secondary antibody and incubated for 30 minutes at 37°C. The tissue section was developed using HRP Conjugated Rabbit IgG Super Vision Assay Kit (Catalog # SV0002) with DAB as the chromogen.

### Submit a product review to [Biocompare.com](https://www.biocompare.com)

Submit a review of this product to [Biocompare.com](https://www.biocompare.com) to receive a \$20 Amazon.com giftcard! Your reviews help your fellow scientists make the right decisions. Thank you for your contribution.



Anti-CD103/Ilgae Antibody

For Research Use Only. Not for use in diagnostic procedures.