

Anti-CSDA Antibody (Center)

Catalog Number: A07100

About YBX3

CSDA binds to the GM-CSF promoter. Seems to act as a repressor. Binds also to full length mRNA and to short RNA sequences containing the consensus site 5'-UCCAUCA-3'. May have a role in translation repression (By similarity).

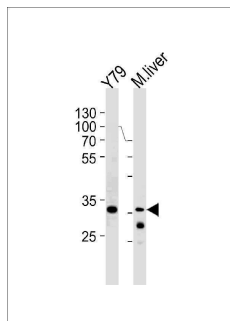
Overview

Product Name	Anti-CSDA Antibody (Center)
Reactive Species	Human, Mouse
Description	Boster Bio Anti-CSDA Antibody (Center) (Catalog # A07100). Tested in WB application(s). This antibody reacts with Human, Mouse.
Application	WB
Clonality	Polyclonal
Formulation	Purified polyclonal antibody supplied in PBS with 0.09% (W/V) sodium azide.
Storage Instructions	Maintain refrigerated at 2-8°C for up to 2 weeks. For long-term storage, store at -20°C in small aliquots to prevent freeze-thaw cycles.
Host	Rabbit
Uniprot ID	P16989

Technical Details

Immunogen	This CSDA antibody is generated from rabbits immunized with a KLH conjugated synthetic peptide between 152-181 amino acids from the Central region of human CSDA.
Predicted Reactive Species	Rat
Isotype	Rabbit IgG
Purification	This antibody is purified through a protein A column, followed by peptide affinity purification.
Suggested Dilutions	WB: 1:1000

Anti-CSDA Antibody (Center) (A07100) Images



CSDA Antibody (Center) western blot analysis in Y79 cell line and mouse liver lysates (35ug/lane). This demonstrates the CSDA antibody detected the CSDA protein (arrow).

Submit a product review to Biocompare.com

Submit a review of this product to Biocompare.com to receive a \$20 Amazon.com giftcard! Your reviews help your fellow scientists make the right decisions. Thank you for your contribution.



Anti-CSDA Antibody (Center)

For Research Use Only. Not for use in diagnostic procedures.