

Anti-NIPA (phospho-S354) ZC3HC1 Antibody

Catalog Number: A07135S354

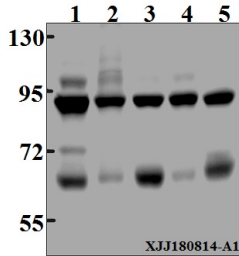
Overview

| | |
|----------------------|---|
| Product Name | Anti-NIPA (phospho-S354) ZC3HC1 Antibody |
| Reactive Species | Human, Mouse, Rat |
| Description | Boster Bio Anti-NIPA (phospho-S354) ZC3HC1 Antibody catalog # A07135S354. Tested in WB applications. This antibody reacts with Human, Mouse, Rat. |
| Application | WB |
| Clonality | Polyclonal |
| Formulation | Rabbit IgG, 1mg/ml in PBS with 0.02% sodium azide, 50% glycerol, pH7.2 |
| Storage Instructions | Store at -20°C for one year. For short term storage and frequent use, store at 4°C for up to one month. Avoid repeated freeze-thaw cycles. |
| Host | Rabbit |
| Uniprot ID | Q86WB0 |

Technical Details

| | |
|---------------------|---|
| Immunogen | Synthetic phosphopeptide derived from human NIPA around the phosphorylation site of Serine 354 |
| Isotype | IgG |
| Form | Liquid |
| Concentration | 1 mg/ml |
| Purification | The antibody was affinity-purified from rabbit antiserum by affinity-chromatography using epitope-specific immunogen and the purity is > 95% (by SDS-PAGE). |
| Suggested Dilutions | WB: 1:500-1:1000 |

Anti-NIPA (phospho-S354) ZC3HC1 Antibody (A07135S354) Images



Western blot (WB) analysis of p-NIPA (S354) pAb at 1:500 dilution Lane1:Hela whole cell lysate(40µg) Lane2:SK-OVCAR3 whole cell lysate(40µg) Lane3:MCF-7 whole cell lysate(40µg) Lane4:C6 whole cell lysate(40µg) Lane5:CT-26 whole cell lysate(40µg)

Submit a product review to Biocompare.com

Submit a review of this product to Biocompare.com to receive a \$20 Amazon.com giftcard! Your reviews help your fellow scientists make the right decisions. Thank you for your contribution.



Anti-NIPA (phospho-S354) ZC3HC1 Antibody

For Research Use Only. Not for use in diagnostic procedures.