

Anti-ENC-1 Antibody

Catalog Number: A07138

About ENC1

The ectoderm-neural cortex-1 (ENC-1) protein is an early and highly specific marker of neural induction in vertebrates. It is a kelch family related protein that functions as an actin-binding protein and has been suggested to be involved in the organization of the actin cytoskeleton during neural fate specification and development of the nervous system. ENC-1 has also been shown to be required for adipocyte differentiation when cytoskeletal reorganization and cell shape change from fibroblastic preadipocytes to spherical adipocytes occur.

Overview

Product Name	Anti-ENC-1 Antibody
Reactive Species	Human, Mouse, Rat
Description	Boster Bio Anti-ENC-1 Antibody (Catalog # A07138). Tested in ELISA, WB, IHC-P, IF applications. This antibody reacts with Human, Mouse, Rat.
Application	ELISA, IF, IHC-P, WB
Clonality	Polyclonal
Formulation	ENC-1 Antibody is supplied in PBS containing 0.02% sodium azide.
Storage Instructions	ENC-1 antibody can be stored at 4°C for three months and -20°C, stable for up to one year. Avoid repeated freeze-thaw cycles. Antibodies should not be exposed to prolonged high temperatures.
Host	Chicken
Uniprot ID	O14682

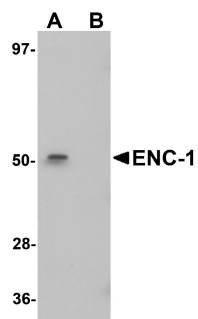
Technical Details

Immunogen	ENC-1 antibody was raised against a 13 amino acid synthetic peptide near the center of human ENC-1. The immunogen is located within amino acids 230 - 280 of ENC-1.
Isotype	IgY
Form	Liquid
Concentration	1 mg/mL
Purification	ENC-1 Antibody is affinity chromatography purified via peptide column.
Suggested Dilutions	Dilute the sample so that the expected range of concentrations fall within the detection range of this kit. If the expected range of concentration is unknown, a pilot test should be conducted to decide the optimal dilution ratio for your samples. Some PubMed article(s) citing the expression level of this target are as follows:

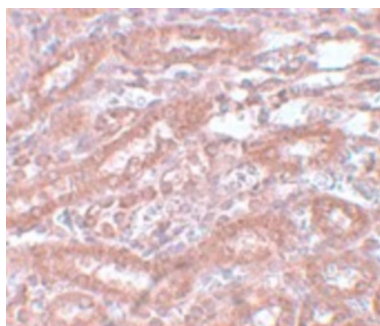
Boster Bio's internal QC testing used:

ENC-1 antibody can be used for detection of ENC-1 by Western blot at 1 ug/mL. Antibody can also be used for immunohistochemistry starting at 5 ug/mL. For immunofluorescence start at 20 ug/mL. Antibody validated: Western Blot in mouse samples; Immunohistochemistry in rat samples and Immunofluorescence in rat samples. All other applications and species not yet tested. Optimal dilutions for each application should be determined by the researcher.

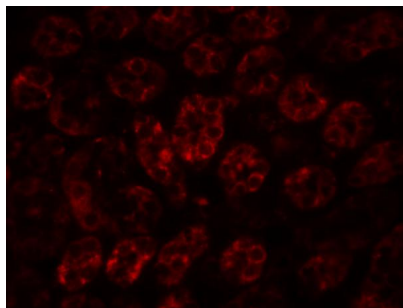
Anti-ENC-1 Antibody (A07138) Images



Western blot analysis of ENC-1 in mouse kidney muscle tissue lysate with ENC-1 antibody at 1 ug/mL in (A) the absence and (B) the presence of blocking peptide.



Immunohistochemistry of ENC-1 in rat kidney tissue with ENC-1 antibody at 5 ug/mL.



Immunofluorescence of ENC-1 in rat kidney tissue with ENC-1 antibody at 20 ug/mL.

Submit a product review to Biocompare.com

Submit a review of this product to Biocompare.com to receive a \$20 Amazon.com giftcard! Your reviews help your fellow scientists make the right decisions. Thank you for your contribution.



Anti-ENC-1 Antibody