

Anti-CP250 CEP250 Antibody

Catalog Number: A07150

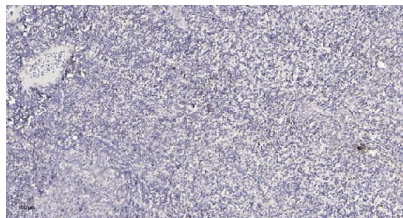
Overview

| | |
|----------------------|--|
| Product Name | Anti-CP250 CEP250 Antibody |
| Reactive Species | Human, Mouse |
| Description | Boster Bio Anti-CP250 CEP250 Antibody catalog # A07150. Tested in IHC, IF applications. This antibody reacts with Human, Mouse. |
| Application | IF, IHC |
| Clonality | Polyclonal |
| Formulation | Liquid form in PBS containing 50% glycerol, and 0.02% sodium azide. |
| Storage Instructions | Store at -20°C for one year. For short term storage and frequent use, store at 4°C for up to one month. Avoid repeated freeze-thaw cycles. |
| Host | Rabbit |
| Uniprot ID | Q9BV73 |

Technical Details

| | |
|---------------------|---|
| Immunogen | Synthesized peptide derived from part region of human protein |
| Isotype | IgG |
| Form | Liquid |
| Concentration | 1 mg/ml |
| Purification | CP250 antibody was affinity-purified from rabbit antiserum by affinity-chromatography using epitope-specific immunogen. |
| Suggested Dilutions | IHC 1:50-300 IF 1:50-200 |

Anti-CP250 CEP250 Antibody (A07150) Images



Immunohistochemical analysis of paraffin-embedded human tonsil. 1, Antibody was diluted at 1:200 (4° overnight). 2, Tris-EDTA, pH9.0 was used for antigen retrieval. 3, Secondary antibody was diluted at 1:200 (room temperature, 30min).

Submit a product review to Biocompare.com

Submit a review of this product to Biocompare.com to receive a \$20 Amazon.com giftcard! Your reviews help your fellow scientists make the right decisions. Thank you for your contribution.



Anti-CP250 CEP250 Antibody

For Research Use Only. Not for use in diagnostic procedures.