

## Anti-NICE4 UBAP2L Antibody

Catalog Number: A07183

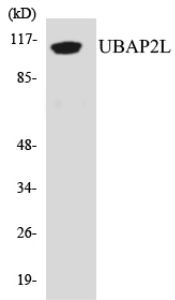
### Overview

Product Name	Anti-NICE4 UBAP2L Antibody
Reactive Species	Human, Mouse
Description	Boster Bio Anti-NICE4 UBAP2L Antibody catalog # A07183. Tested in WB, ELISA applications. This antibody reacts with Human, Mouse.
Application	ELISA, WB
Clonality	Polyclonal
Formulation	Liquid in PBS containing 50% glycerol, 0.5% stabilizing protein and 0.02% sodium azide. This antibody is supplied in a stabilized formulation. Compatibility with conjugation reactions depends on the chemistry of the conjugation method used. For conjugation methods that are not compatible with the stabilizing components present in this formulation, a carrier-free antibody format is required.
Storage Instructions	Store at -20°C for one year. For short term storage and frequent use, store at 4°C for up to one month. Avoid repeated freeze-thaw cycles.
Host	Rabbit
Uniprot ID	Q14157

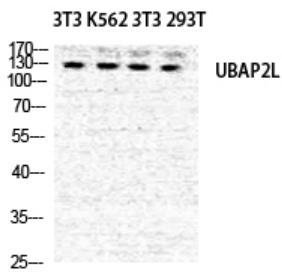
### Technical Details

Immunogen	The antiserum was produced against synthesized peptide derived from human UBAP2L. AA range:561-610
Isotype	IgG
Form	Liquid
Concentration	1 mg/ml
Purification	The antibody was affinity-purified from rabbit antiserum by affinity-chromatography using a epitope-specific immunogen.
Suggested Dilutions	WB 1:500-1:2000 ELISA 1:20000

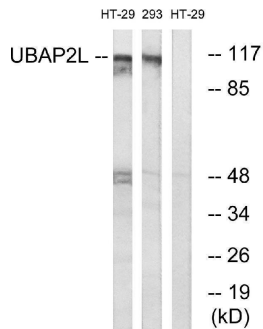
## Anti-NICE4 UBAP2L Antibody (A07183) Images



Western blot analysis of the lysates from Jurkat cells using UBAP2L antibody.



Western Blot analysis of NIH-3T3 K562 NIH-3T3 293T cells using NICE4 Polyclonal Antibody diluted at 1:500



Western blot analysis of lysates from HT-29 and 293 cells, using UBAP2L Antibody. The lane on the right is blocked with the synthesized peptide.

### Submit a product review to Biocompare.com

Submit a review of this product to Biocompare.com to receive a \$20 Amazon.com giftcard! Your reviews help your fellow scientists make the right decisions. Thank you for your contribution.



Anti-NICE4 UBAP2L Antibody

For Research Use Only. Not for use in diagnostic procedures.