

Anti-Interleukin-27 subunit beta EBI3 Antibody

Catalog Number: A07190-1

About EBI3

EBI3 is a subunit in two distinct heterodimeric cytokines: interleukin-27 (IL-27) and IL-35. Like interleukin-23 (IL-23), IL-27 is a recently discovered member of the IL-6/IL-12 family of proinflammatory and immunoregulatory cytokines. It exists as a heterodimer composed of the p40-related protein EBI3 and an IL-12 p35-related protein termed p28. IL-27 is produced after activation by antigen-presenting cells and induces proliferation of naïve but not memory CD4+ T-cells. It acts by binding to its receptor WSX-1 (also known as TCCR) and gp130 which results in the activation of a Jak/STAT signaling cascade, suggesting the IL-27 is involved in the regulation of immune processes. It has been suggested that IL-27 can also be used as a therapeutic agent against cancer as it can also induce tumor-specific anti-tumor activity mediated through CD8+ T-cells, IFN-gamma, and T-bet. IL-35 is composed of EBI3 and the p35 subunit of IL-12 and has been reported to have therapeutic effects against collagen-induced arthritis by expanding the population of regulatory T cells and suppressing Th17 cells. At least two isoform of EBI3 are known to exist.

Overview

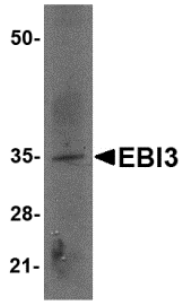
Product Name	Anti-Interleukin-27 subunit beta EBI3 Antibody
Reactive Species	Human, Mouse, Rat
Description	Boster Bio Anti-Interleukin-27 subunit beta EBI3 Antibody (Catalog # A07190-1). Tested in ELISA, WB, IHC-P, IF applications. This antibody reacts with Human, Mouse, Rat.
Application	ELISA, IF, IHC-P, WB
Clonality	Polyclonal
Formulation	EBI3 Antibody is supplied in PBS containing 0.02% sodium azide.
Storage Instructions	EBI3 antibody can be stored at 4°C for three months and -20°C, stable for up to one year. Avoid repeated freeze-thaw cycles. Antibodies should not be exposed to prolonged high temperatures.
Host	Rabbit
Uniprot ID	Q14213

Technical Details

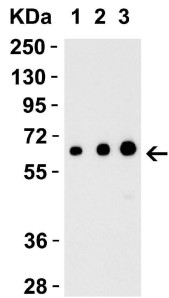
Immunogen	Anti-EBI-3 antibody was raised against a peptide corresponding to 16 amino acids near the center of mature human EBI-3. The immunogen is located within amino acids 150 - 200 of EBI3.
Predicted Reactive Species	Mouse, Rat
Isotype	IgG
Form	Liquid
Concentration	1 mg/mL

Purification	EBI3 Antibody is affinity chromatography purified via peptide column.
Suggested Dilutions	WB: 0.5 - 2 ug/mL; IF: 20 ug/mL ; IHC: 2.5 ug/mL; Antibody validated: Western Blot in human and rat samples; Immunofluorescence and Immunohistochemistry in human samples. All other applications and species not yet tested. Optimal dilutions for each application should be determined by the researcher.

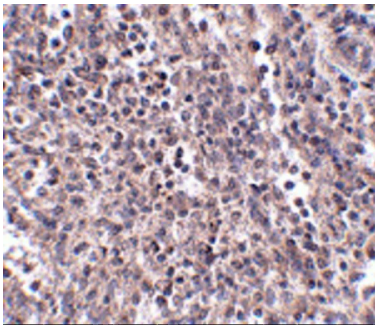
Anti-Interleukin-27 subunit beta EBI3 Antibody (A07190-1) Images



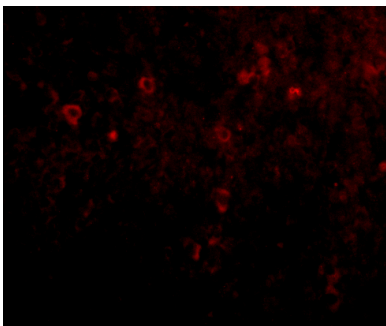
Western Blot Validation in Rat Spleen Tissue Loading: 15 ug of lysates per lane. Antibodies: EBI-3 A07190-1 (2 ug/mL), 1h incubation at RT in 5% NFDm/TBST. Secondary: Goat anti-rabbit IgG HRP conjugate at 1:10000 dilution.



Recombinant Protein Validation Loading: 30 ng of human recombinant IL-17 (IL-17A+IL-17B) protein per lane. Antibodies: EBI-3 A07190-1, 1h incubation at RT in 5% NFDm/TBST. Secondary: Goat anti-rabbit IgG HRP conjugate at 1:10000 dilution. Lane 1: 0.5 ug/mL, Lane 2: 1 ug/mL, Lane 3: 2 ug/mL,



Immunohistochemistry Validation of EBI-3 in Human Spleen Tissue Immunohistochemical analysis of paraffin-embedded Human Spleen tissue using anti-EBI-3 antibody (A07190-1) at 2.5 ug/ml. Tissue was fixed with formaldehyde and blocked with 10% serum for 1 h at RT; antigen retrieval was by heat mediation with a citrate buffer (pH6). Samples were incubated with primary antibody overnight at 4°C. A goat anti-rabbit IgG H&L (HRP) at 1/250 was used as secondary. Counter stained with Hematoxylin.



Immunofluorescence Validation of EBI-3 in Human Spleen Tissue Immunofluorescent analysis of 4% paraformaldehyde-fixed Human Spleen Tissue labeling EBI-3 with A07190-1 at 20 ug/mL, followed by goat anti-rabbit IgG secondary antibody at 1/500 dilution (red).

Submit a product review to [Biocompare.com](https://www.biocompare.com)

Submit a review of this product to [Biocompare.com](https://www.biocompare.com) to receive a \$20 Amazon.com giftcard! Your reviews help your fellow scientists make the right decisions. Thank you for your contribution.



Anti-Interleukin-27 subunit beta EB13 Antibody

For Research Use Only. Not for use in diagnostic procedures.