

Anti-CMKLR2 Antibody Picoband®

Catalog Number: A07199-1

About CMKLR2

Enables adipokinetic hormone binding activity and adipokinetic hormone receptor activity. Predicted to be involved in glucose homeostasis and neuropeptide signaling pathway. Located in nucleoplasm and plasma membrane.

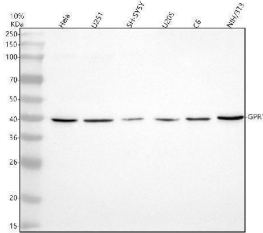
Overview

| | |
|----------------------|--|
| Product Name | Anti-CMKLR2 Antibody Picoband® |
| Reactive Species | Human, Mouse, Rat |
| Description | Boster Bio Anti-CMKLR2 Antibody Picoband® catalog # A07199-1. Tested in WB, Flow Cytometry, ELISA applications. This antibody reacts with Human, Mouse, Rat. The brand Picoband indicates this is a premium antibody that guarantees superior quality, high affinity, and strong signals with minimal background in Western blot applications. Only our best-performing antibodies are designated as Picoband, ensuring unmatched performance. |
| Application | ELISA, Flow Cytometry, WB |
| Clonality | Polyclonal |
| Formulation | Each vial contains 4 mg Trehalose, 0.9 mg NaCl, 0.2 mg Na ₂ HPO ₄ . |
| Storage Instructions | At -20°C for one year from date of receipt. After reconstitution, at 4°C for one month. It can also be aliquotted and stored frozen at -20°C for six months. Avoid repeated freezing and thawing. |
| Host | Rabbit |
| Uniprot ID | P46091 |

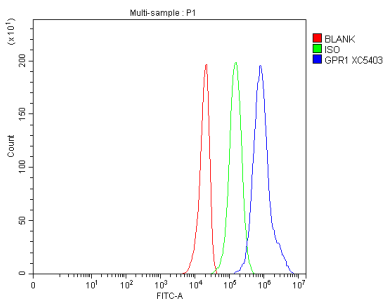
Technical Details

| | |
|---------------------|---|
| Immunogen | E.coli-derived human CMKLR2 recombinant protein (Position: M1-Q355). Human CMKLR2 shares 80% and 78.6% amino acid (aa) sequence identity with mouse and rat CMKLR2, respectively. |
| Form | Lyophilized |
| Concentration | Adding 0.2 ml of distilled water will yield a concentration of 500 ug/ml. |
| Purification | Immunogen affinity purified. |
| Suggested Dilutions | Western blot, 0.25-0.5 ug/ml, Human, Mouse, Rat Flow Cytometry (Fixed), 1-3 ug/1x10 ⁶ cells, Human ELISA, 0.1-0.5 ug/ml |

Anti-CMKLR2 Antibody Picoband® (A07199-1) Images



Western blot analysis of CMKLR2 using anti-CMKLR2 antibody (A07199-1). Electrophoresis was performed on a 10% SDS-PAGE gel at 80V (Stacking gel) / 120V (Resolving gel) for 2 hours. The sample well of each lane was loaded with 30 ug of sample under reducing conditions. Lane 1: human Hela whole cell lysates, Lane 2: human U251 whole cell lysates, Lane 3: human SH-SY5Y whole cell lysates, Lane 4: human U2OS whole cell lysates, Lane 5: rat C6 whole cell lysates, Lane 6: mouse NIH/3T3 whole cell lysates. After electrophoresis, proteins were transferred to a nitrocellulose membrane at 150 mA for 50-90 minutes. Blocked the membrane with 5% non-fat milk/TBS for 1.5 hour at RT. The membrane was incubated with rabbit anti-CMKLR2 antigen affinity purified polyclonal antibody (A07199-1) at 0.5 ug/mL overnight at 4°C, then washed with TBS-0.1% Tween 3 times with 5 minutes each and probed with a goat anti-rabbit IgG-HRP secondary antibody at a dilution of 1:5000 for 1.5 hour at RT. The signal is developed using an ECL Plus Western Blotting Substrate (Catalog # AR1196-200) with Tanon 5200 system. A specific band was detected for CMKLR2 at approximately 41 kDa. The expected band size for CMKLR2 is at 41 kDa.



Flow Cytometry analysis of U251 cells using anti-CMKLR2 antibody (A07199-1). Overlay histogram showing U251 cells stained with A07199-1 (Blue line). The cells were fixed with 4% paraformaldehyde and blocked with 10% normal goat serum. And then incubated with rabbit anti-CMKLR2 Antibody (A07199-1, 1 ug/1x10⁶ cells) for 30 min at 20°C. DyLight®488 conjugated goat anti-rabbit IgG (BA1127, 5-10 ug/1x10⁶ cells) was used as secondary antibody for 30 minutes at 20°C. Isotype control antibody (Green line) was rabbit IgG (1 ug/1x10⁶) used under the same conditions. Unlabelled sample without incubation with primary antibody and secondary antibody (Red line) was used as a blank control.

Submit a product review to [Biocompare.com](https://www.biocompare.com)

Submit a review of this product to [Biocompare.com](https://www.biocompare.com) to receive a \$20 Amazon.com giftcard! Your reviews help your fellow scientists make the right decisions. Thank you for your contribution.



Anti-CMKLR2 Antibody

For Research Use Only. Not for use in diagnostic procedures.