

Anti-Kin of IRRE-like protein 3 KIRREL3 Antibody

Catalog Number: A07202

Introduction

CD3epsilon is a 20kD chain, which together with CD3lambda, CD3delta, and CD3zeta, and a T cell receptor (alpha/beta or gamma/delta) form the CD3/T-cell receptor complex. It is a specific marker for T lymphocytes, NK T cells, and some thymocytes. Crosslinking of TCR initiates an intracellular signaling cascade resulting in cellular activation and proliferation. The OKT3 antibody has been reported to have potent immunosuppressive properties in vivo and has been proved effective in the treatment of renal, heart, and liver allograft rejection.

This antibody is routinely tested by flow cytometric analysis. Flow cytometry and other applications were tested during antibody development or are reported in the literature.

Application Information

Each lot of this antibody has been quality control tested by flow cytometric analysis of human PBMCs. For flow cytometric staining, the recommended use of this antibody is $\leq 0.5\mu\text{g}$ per 1×10^6 cells in $100\mu\text{l}$ of staining volume followed by a secondary fluorescent conjugated anti-mouse antibody. However, it is strongly suggested that the antibody reactivity be empirically titrated for optimal performance in the application of interest.

About KIRREL3

KIRREL3, also known as nephrin-like protein 2, is a type I transmembrane protein belonging to a family of three podocin interacting proteins and the immunoglobulin superfamily (1). KIRREL3 is involved in the regulation of both glomerular and neural development (2), and more specifically, the nucleogenesis of the pontine nuclei in the developing hindbrain (3). KIRREL3 has also been shown to interact with the synaptic scaffold protein calmodulin-associated serine/threonine kinase (CASK) in neuronal cells (4).

Overview

Product Name	Anti-Kin of IRRE-like protein 3 KIRREL3 Antibody
Reactive Species	Human, Mouse, Rat
Description	Boster Bio Anti-Kin of IRRE-like protein 3 KIRREL3 Antibody (Catalog # A07202). Tested in ELISA, WB, IHC-P, IF applications. This antibody reacts with Human, Mouse, Rat.
Conjugate	Biotin
Application	ELISA, IF, IHC-P, WB
Clonality	Polyclonal SK7
Formulation	KIRREL3 antibody is supplied in PBS containing 0.02% sodium azide.
Storage Instructions	KIRREL3 antibody can be stored at 4°C for three months and -20°C, stable for up to one year.
Host	Rabbit

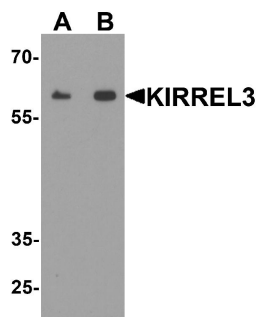
Uniprot ID

Q8IZU9

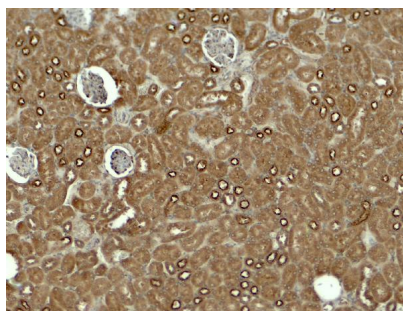
Technical Details

Immunogen	KIRREL3 antibody was raised against a 19 amino acid peptide near the amino terminus of human KIRREL3. The immunogen is located within amino acids 20 - 70 of KIRREL3.
Predicted Reactive Species	Mouse, Rat
Cross Reactivity	KIRREL3 antibody is human, mouse and rat reactive. At least two isoforms are known to exist; this antibody will detect both isoforms. KIRREL3 antibody is predicted to not cross-react with other members of the KIRREL protein family.
Isotype	IgG
Form	Liquid
Concentration	1 mg/mL
Purification	KIRREL3 antibody is affinity chromatography purified via peptide column.
Suggested Dilutions	<p>Dilute the sample so that the expected range of concentrations fall within the detection range of this kit.</p> <p>If the expected range of concentration is unknown, a pilot test should be conducted to decide the optimal dilution ratio for your samples.</p> <p>Some PubMed article(s) citing the expression level of this target are as follows:</p> <p>Boster Bio's internal QC testing used:</p> <p>KIRREL3 antibody can be used for detection of KIRREL3 by Western blot at 1 - 2 ug/ml. Antibody can also be used for immunohistochemistry starting at 5 ug/mL. For immunofluorescence start at 20 ug/mL.</p> <p>Antibody validated: Western Blot in mouse samples; Immunohistochemistry in mouse samples and Immunofluorescence in mouse samples. All other applications and species not yet tested. Optimal dilutions for each application should be determined by the researcher.</p>

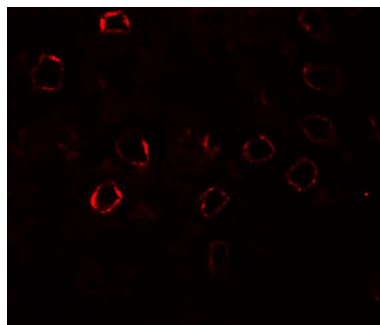
Anti-Kin of IRRE-like protein 3 KIRREL3 Antibody (A07202) Images



Western blot analysis of KIRREL3 in mouse kidney tissue lysate with KIRREL3 antibody at (A) 1 and (B) 2 ug/ml.



Immunohistochemistry of KIRREL3 in mouse kidney tissue with KIRREL3 antibody at 5 ug/ml.



Immunofluorescence of KIRREL3 in mouse kidney tissue with KIRREL3 antibody at 20 ug/ml.

Submit a product review to Biocompare.com

Submit a review of this product to Biocompare.com to receive a \$20 Amazon.com giftcard! Your reviews help your fellow scientists make the right decisions. Thank you for your contribution.



Anti-Kin of IRRE-like protein 3 KIRREL3 Antibody