

Anti-APEX2 Antibody Picoband®

Catalog Number: A07203

About APEX2

APEX2, also called apurinic/aprimidinic endonuclease like-2, is a member of the apurinic/aprimidinic (AP) family of endonucleases that initiate the repair of AP sites formed by spontaneous hydrolysis of the N-glycosylic bond, mutagen-induced base release, or damaged-base excision by a DNA repair glycosylase. RT-PCR detected APEX2 expression in HeLa cells, Jurkat cells, and human kidney, brain and fetal brain tissue. The APEX2 gene is mapped to chromosome Xp11.21. APEX2 participates in both nuclear and mitochondrial base excision repair (BER) and it can play a role in processing 3-prime-damaged termini or 3-prime-mismatched nucleotides. Additionally, APEX2 displayed weaker AP site-specific and 3-prime nuclease activities compared to APEX1.

Overview

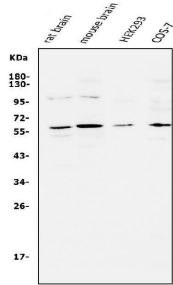
Product Name	Anti-APEX2 Antibody Picoband®
Reactive Species	Human, Monkey, Mouse, Rat
Description	Boster Bio Anti-APEX2 Antibody Picoband® catalog # A07203. Tested in Flow Cytometry, WB applications. This antibody reacts with Human, Monkey, Mouse, Rat. The brand Picoband indicates this is a premium antibody that guarantees superior quality, high affinity, and strong signals with minimal background in Western blot applications. Only our best-performing antibodies are designated as Picoband, ensuring unmatched performance.
Application	Flow Cytometry, WB
Clonality	Polyclonal
Formulation	Each vial contains 4mg Trehalose, 0.9mg NaCl, 0.2mg Na ₂ HPO ₄ , 0.05mg NaN ₃ .
Storage Instructions	Store at -20°C for one year from date of receipt. After reconstitution, at 4°C for one month. It can also be aliquotted and stored frozen at -20°C for six months. Avoid repeated freeze-thaw cycles.
Host	Rabbit
Uniprot ID	Q9UBZ4

Technical Details

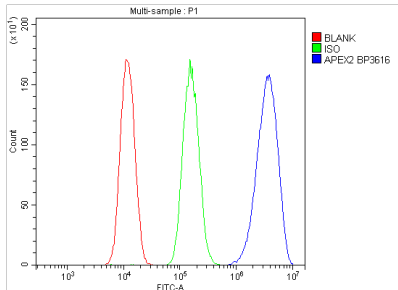
Immunogen	E.coli-derived human APEX2 recombinant protein (Position: L102-A210). Human APEX2 shares 91.7% amino acid (aa) sequence identity with mouse APEX2.
Recommended Detection Systems	Boster recommends Enhanced Chemiluminescent Kit with anti-Rabbit IgG (EK1002) for Western blot.
Cross Reactivity	No cross-reactivity with other proteins.
Isotype	Rabbit IgG

Form	Lyophilized
Concentration	Adding 0.2 ml of distilled water will yield a concentration of 500 ug/ml.
Purification	Immunogen affinity purified.
Suggested Dilutions	Western blot, 0.1-0.5ug/ml, Human, Mouse, Monkey, Rat Flow Cytometry (Fixed), 1-3ug/1x10 ⁶ cells, Human

Anti-APEX2 Antibody Picoband® (A07203) Images



Western blot analysis of APEX2 using anti-APEX2 antibody (A07203). Electrophoresis was performed on a 5-20% SDS-PAGE gel at 70V (Stacking gel) / 90V (Resolving gel) for 2-3 hours. The sample well of each lane was loaded with 50ug of sample under reducing conditions. lane 1: rat brain tissue lysate, lane 2: mouse brain tissue lysate, lane 3: HEK293 whole cell lysate, lane 4: COS-7 whole cell lysate. After Electrophoresis, proteins were transferred to a Nitrocellulose membrane at 150mA for 50-90 minutes. Blocked the membrane with 5% Non-fat Milk/ TBS for 1.5 hour at RT. The membrane was incubated with rabbit anti-APEX2 antigen affinity purified polyclonal antibody (Catalog # A07203) at 0.5 ug/mL overnight at 4°C, then washed with TBS-0.1%Tween 3 times with 5 minutes each and probed with a goat anti-rabbit IgG-HRP secondary antibody at a dilution of 1:10000 for 1.5 hour at RT. The signal is developed using an Enhanced Chemiluminescent detection (ECL) kit (Catalog # EK1002) with Tanon 5200 system. A specific band was detected for APEX2 at approximately 57KD. The expected band size for APEX2 is at 57KD.



Flow Cytometry analysis of A549 cells using anti-CYP7A1 antibody (A07203). Overlay histogram showing A549 cells stained with A07203 (Blue line). To facilitate intracellular staining, cells were fixed with 4% paraformaldehyde and permeabilized with permeabilization buffer. The cells were blocked with 10% normal goat serum. And then incubated with rabbit anti-CYP7A1 Antibody (A07203, 1ug/1x10⁶ cells) for 30 min at 20°C. DyLight®488 conjugated goat anti-rabbit IgG (BA1127, 5-10ug/1x10⁶ cells) was used as secondary antibody for 30 minutes at 20°C. Isotype control antibody (Green line) was rabbit IgG (1ug/1x10⁶) used under the same conditions. Unlabelled sample (Red line) was also used as a control.

Submit a product review to Biocompare.com

Submit a review of this product to Biocompare.com to receive a \$20 Amazon.com giftcard! Your reviews help your fellow scientists make the right decisions. Thank you for your contribution.



Anti-APEX2 Antibody

For Research Use Only. Not for use in diagnostic procedures.