

## Anti-APEX2 Antibody (Center)

Catalog Number: A07203-2

### About APEX2

APEX2 may participate in both nuclear and mitochondrial post-replicative base excision repair (BER). In the nucleus functions in the PCNA-dependent BER pathway.

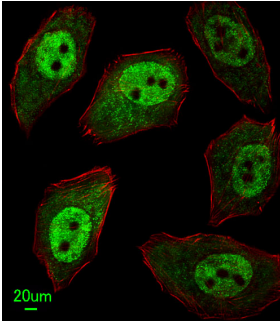
### Overview

Product Name	Anti-APEX2 Antibody (Center)
Reactive Species	Human
Description	Boster Bio Anti-APEX2 Antibody (Center) (Catalog # A07203-2). Tested in WB, IF, Flow Cytometry, IHC-P application(s). This antibody reacts with Human.
Application	Flow Cytometry, IF, IHC-P, WB
Clonality	Polyclonal
Formulation	Purified polyclonal antibody supplied in PBS with 0.09% (W/V) sodium azide.
Storage Instructions	Maintain refrigerated at 2-8°C for up to 2 weeks. For long-term storage, store at -20°C in small aliquots to prevent freeze-thaw cycles.
Host	Rabbit
Uniprot ID	Q9UBZ4

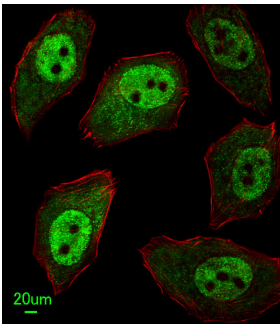
### Technical Details

Immunogen	This APEX2 antibody is generated from rabbits immunized with a KLH conjugated synthetic peptide between 143-171 amino acids from the Central region of human APEX2.
Predicted Reactive Species	Monkey, Mouse
Isotype	Rabbit IgG
Purification	This antibody is purified through a protein A column, followed by peptide affinity purification.
Suggested Dilutions	IF: 1:25 WB: 1:1000 IHC-P: 1:10-1:50 FC: 1:10-1:50

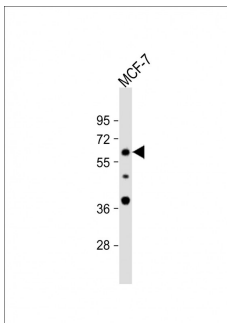
## Anti-APEX2 Antibody (Center) (A07203-2) Images



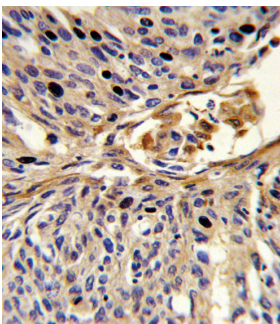
Immunofluorescent analysis of U251 cells, using APEX2 Antibody (Center). A07203-2 was diluted at 1:25 dilution. Alexa Fluor 488-conjugated goat anti-rabbit IgG at 1:400 dilution was used as the secondary antibody (green). Cytoplasmic actin was counterstained with Dylight Fluor® 554 (red) conjugated Phalloidin (red).



Immunofluorescent analysis of U251 cells

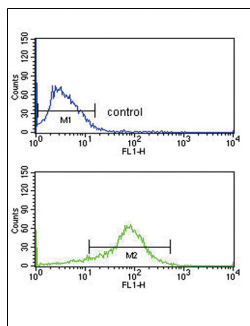


Anti-APEX2 Antibody (Center) at 1:1000 dilution + MCF-7 whole cell lysate. Lysates/proteins at 20 µg per lane. Secondary Goat Anti-Rabbit IgG, (H+L), Peroxidase conjugated at 1/10000 dilution. Predicted band size : 57 kDa. Blocking/Dilution buffer: 5% NFDM/TBST.



Formalin-fixed and paraffin-embedded human lung carcinoma reacted with APEX2 Antibody (Center), which was peroxidase-conjugated to the secondary antibody, followed by DAB staining. This data demonstrates the use of this antibody for immunohistochemistry; clinical relevance has not been evaluated.

APEX2 Antibody (Center) flow cytometry analysis of MCF-7 cells (bottom histogram) compared to a negative control cell (top histogram). FITC-conjugated goat-anti-rabbit secondary antibodies were used for the analysis.



## Submit a product review to Biocompare.com

Submit a review of this product to Biocompare.com to receive a \$20 Amazon.com giftcard! Your reviews help your fellow scientists make the right decisions. Thank you for your contribution.



Anti-APEX2 Antibody (Center)

For Research Use Only. Not for use in diagnostic procedures.