

## Anti-SHOC2 Antibody

Catalog Number: A07214

### About SHOC2

SHOC2 protein participates in protein binding / transferase activity in the fibroblast growth factor receptor signaling pathway and Ras protein signal transduction. It is a widely expressed protein composed almost entirely of leucine-rich repeats (LRR), with a lysine-rich sequence at the amino terminus and cytoplasmically localized. SHOC2 acts as a positive modulator of the RAS-MAPK signaling cascade, which is elicited by EGL-15 and LET-23 and mediated by LET-60. SHOC2 together with protein phosphatase 1c (PP1c) forms a highly specific M-Ras effector complex and is essential for activation of the MAPK pathway by growth factors. Furthermore, in tumor cells with Ras gene mutations, inhibition of SHOC2 expression inhibits MAPK, but not PI3K activity. The SHOC2-PP1c holoenzyme provides an attractive therapeutic target for inhibition of the MAPK pathway in cancer. Recent studies show that aberrantly acquired N-myristoylation of SHOC2 causes human disease Noonan-like syndrome with loose anagen hair.

### Overview

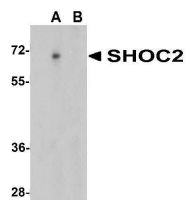
Product Name	Anti-SHOC2 Antibody
Reactive Species	Human, Mouse, Rat
Description	Boster Bio Anti-SHOC2 Antibody (Catalog # A07214). Tested in ELISA, WB, IHC-P applications. This antibody reacts with Human, Mouse, Rat.
Application	ELISA, IHC-P, WB
Clonality	Polyclonal
Formulation	SHOC2 Antibody is supplied in PBS containing 0.02% sodium azide.
Storage Instructions	SHOC2 antibody can be stored at 4°C for three months and -20°C, stable for up to one year. Avoid repeated freeze-thaw cycles. Antibodies should not be exposed to prolonged high temperatures.
Host	Rabbit
Uniprot ID	Q9UQ13

### Technical Details

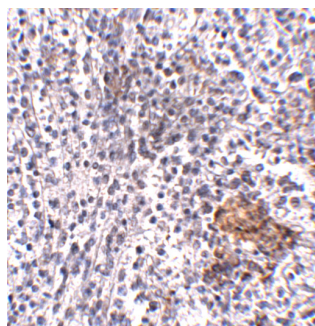
Immunogen	SHOC2 antibody was raised against a 21 amino acid synthetic peptide near the amino terminus of human SHOC2. The immunogen is located within amino acids 30 - 80 of SHOC2.
Predicted Reactive Species	Bovine, Chicken
Isotype	IgG
Form	Liquid
Concentration	1 mg/mL

Purification	SHOC2 Antibody is affinity chromatography purified via peptide column.
Suggested Dilutions	SHOC2 antibody can be used for detection of Shoc2 by Western blot at 1-2 ug/mL. Antibody can also be used for immunohistochemistry starting at 5 ug/mL. Antibody validated: Western Blot in human samples and Immunohistochemistry in human samples. All other applications and species not yet tested. Optimal dilutions for each application should be determined by the researcher.

## Anti-SHOC2 Antibody (A07214) Images



Western blot analysis of SHOC2 in Jurkat cell lysate with SHOC2 antibody at 1 ug/mL in (A) the absence and (B) the presence of blocking peptide



Immunohistochemistry of SHOC2 in human spleen tissue with SHOC2 antibody at 5 ug/mL.

### Submit a product review to [Biocompare.com](https://www.biocompare.com)

Submit a review of this product to [Biocompare.com](https://www.biocompare.com) to receive a \$20 Amazon.com giftcard! Your reviews help your fellow scientists make the right decisions. Thank you for your contribution.



Anti-SHOC2 Antibody

For Research Use Only. Not for use in diagnostic procedures.