

Anti-Protein tweety homolog 1 TTYH1 Antibody

Catalog Number: A07215

About TTYH1

TTYH1 is a member of the tweety family of proteins, a family of chloride anion channels containing five transmembrane regions. TTYH1 is a Ca²⁺-independent, volume-sensitive large conductance chloride (Cl⁻) channel. TTYH1 is primarily expressed in neural tissue and upregulated in astrocytoma, glioma, and several other cancers. Recent experiments have shown that TTYH1 is an integral endoplasmic reticulum (ER) membrane protein involved in cell proliferation and is thought to play an essential role in embryonic cell growth, possibly through the Ca²⁺ storage/release process in ER membranes during early development.

Overview

Product Name	Anti-Protein tweety homolog 1 TTYH1 Antibody
Reactive Species	Human
Description	Boster Bio Anti-Protein tweety homolog 1 TTYH1 Antibody (Catalog # A07215). Tested in ELISA, WB, ICC applications. This antibody reacts with Human.
Application	ELISA, ICC, WB
Clonality	Polyclonal
Formulation	TTYH1 Antibody is supplied in PBS containing 0.02% sodium azide.
Storage Instructions	TTYH1 antibody can be stored at 4°C for three months and -20°C, stable for up to one year. Avoid repeated freeze-thaw cycles. Antibodies should not be exposed to prolonged high temperatures.
Host	Rabbit
Uniprot ID	Q9H313

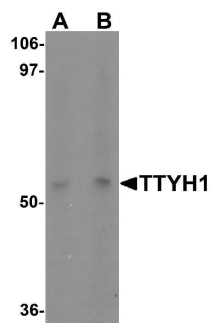
Technical Details

Immunogen	TTYH1 antibody was raised against a 17 amino acid synthetic peptide near the carboxy terminus of human TTYH1. The immunogen is located within the last 50 amino acids of TTYH1.
Predicted Reactive Species	Bovine, Chicken
Cross Reactivity	TTYH1 antibody is human specific. Multiple isoforms of TTYH1 are known to exist.
Isotype	IgG
Form	Liquid
Concentration	1 mg/mL
Purification	TTYH1 Antibody is affinity chromatography purified via peptide column.

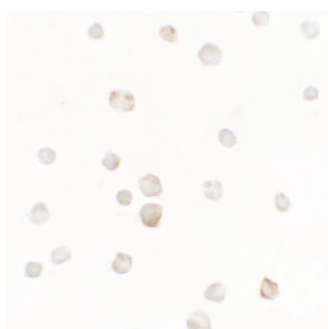
Suggested Dilutions

TTYH1 antibody can be used for detection of TTYH1 by Western blot at 1 - 2 ug/mL. Antibody can also be used for immunocytochemistry starting at 5 ug/mL.
Antibody validated: Western Blot in human samples and Immunocytochemistry in human samples. All other applications and species not yet tested. Optimal dilutions for each application should be determined by the researcher.

Anti-Protein tweety homolog 1 TTYH1 Antibody (A07215) Images



Western blot analysis of TTYH1 in Raji cell lysate with TTYH1 antibody at (A) 1 and (B) 2 ug/mL.



Immunocytochemistry of TTYH1 in Raji cells with TTYH1 antibody at 5 ug/mL.

Submit a product review to [Biocompare.com](https://www.biocompare.com)

Submit a review of this product to [Biocompare.com](https://www.biocompare.com) to receive a \$20 Amazon.com giftcard! Your reviews help your fellow scientists make the right decisions. Thank you for your contribution.



Anti-Protein tweety homolog 1 TTYH1 Antibody

For Research Use Only. Not for use in diagnostic procedures.