

Anti-SAR1A Antibody (Center)

Catalog Number: A07224-1

About SAR1A

SAR1A is involved in transport from the endoplasmic reticulum to the Golgi apparatus (By similarity) and required to maintain SEC16A localization at discrete locations on the ER membrane perhaps by preventing its dissociation. SAR1A-GTP-dependent assembly of SEC16A on the ER membrane forms an organized scaffold defining endoplasmic reticulum exit sites (ERES).

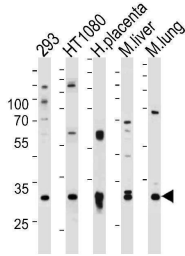
Overview

Product Name	Anti-SAR1A Antibody (Center)
Reactive Species	Human
Description	Boster Bio Anti-SAR1A Antibody (Center) (Catalog # A07224-1). Tested in WB, Flow Cytometry, IHC-P application(s). This antibody reacts with Human.
Application	Flow Cytometry, IHC-P, WB
Clonality	Polyclonal
Formulation	Purified polyclonal antibody supplied in PBS with 0.09% (W/V) sodium azide.
Storage Instructions	Maintain refrigerated at 2-8°C for up to 2 weeks. For long-term storage, store at -20°C in small aliquots to prevent freeze-thaw cycles.
Host	Rabbit
Uniprot ID	Q9NR31

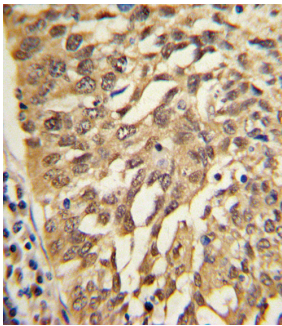
Technical Details

Immunogen	This SAR1A antibody is generated from rabbits immunized with a KLH conjugated synthetic peptide between 122-149 amino acids from the Central region of human SAR1A.
Predicted Reactive Species	Bovine, Mouse, Pig
Isotype	Rabbit IgG
Purification	This antibody is purified through a protein A column, followed by peptide affinity purification.
Suggested Dilutions	WB: 1:1000 IHC-P: 1:10-1:50 FC: 1:10-1:50

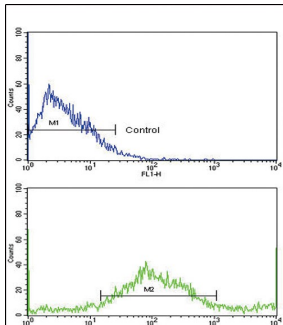
Anti-SAR1A Antibody (Center) (A07224-1) Images



Western blot analysis of lysates from 293, HT1080 cell line, human placenta, mouse liver and lung tissue (from left to right), using SAR1A Antibody (Center). A07224-1 was diluted at 1:1000 at each lane. A goat anti-rabbit IgG H&L (HRP) at 1:5000 dilution was used as the secondary antibody. Lysates at 35ug per lane.



Formalin-fixed and paraffin-embedded human lung carcinoma with SAR1A Antibody (Center), which was peroxidase-conjugated to the secondary antibody, followed by DAB staining. This data demonstrates the use of this antibody for immunohistochemistry; clinical relevance has not been evaluated.



Flow cytometric analysis of NCI-H292 cells using SAR1A Antibody (Center) (bottom histogram) compared to a negative control cell (top histogram). FITC-conjugated goat anti-rabbit secondary antibodies were used for the analysis.

Submit a product review to [Biocompare.com](https://www.biocompare.com)

Submit a review of this product to [Biocompare.com](https://www.biocompare.com) to receive a \$20 Amazon.com giftcard! Your reviews help your fellow scientists make the right decisions. Thank you for your contribution.



Anti-SAR1A Antibody (Center)

For Research Use Only. Not for use in diagnostic procedures.