

Anti-NOD3 NLRC3 Antibody

Catalog Number: A07242

About NLRC3

NOD3 is a member of the NOD (nucleotide-binding oligomerization domain) family, a group of proteins that are involved in innate immune defense. NOD3 also known as NLR family CARD containing 3 (NLRC3), is predominantly expressed in the immune system, particularly in T lymphocytes, and its expression is strongly down-regulated following stimulation of the T-cell receptor complex and CD28, suggesting that NOD3 plays a role in attenuating the activation of T cells. NOD3 inhibits NF-kappaB, AP-1 and NFAT transcriptional activation in Jurkat T cells downstream of CD3/CD28 stimulation or treatment with PMA/ionomycin and decreases IL-2 and CD25 mRNA induction in activated cells.

Overview

Product Name	Anti-NOD3 NLRC3 Antibody
Reactive Species	Human, Mouse, Rat
Description	Boster Bio Anti-NOD3 NLRC3 Antibody (Catalog # A07242). Tested in ELISA, WB, IF applications. This antibody reacts with Human, Mouse, Rat.
Application	ELISA, IF, WB
Clonality	Polyclonal
Formulation	NOD3 Antibody is supplied in PBS containing 0.02% sodium azide.
Storage Instructions	Antibody can be stored at 4°C up to one year. Antibodies should not be exposed to prolonged high temperatures.
Host	Rabbit
Uniprot ID	Q7RTR2

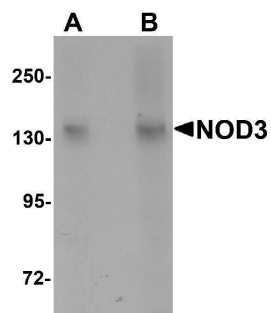
Technical Details

Immunogen	NOD3 antibody was raised against an 18 amino acid synthetic peptide near the center of human NOD3. The immunogen is located within amino acids 630 - 680 of NOD3.
Predicted Reactive Species	Bovine, Rabbit
Isotype	IgG
Form	Liquid
Concentration	1 mg/mL
Purification	NOD3 Antibody is affinity chromatography purified via peptide column.
Suggested Dilutions	NOD3 antibody can be used for detection of NOD3 by Western blot at 1 - 2 ug/mL. Antibody can also be used for immunofluorescence starting at 20 ug/mL. For immunofluorescence start at 20

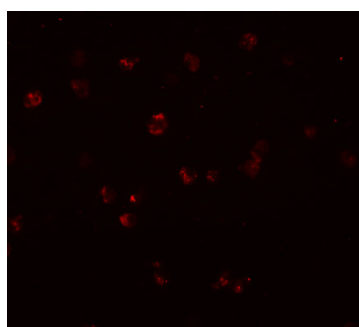
ug/mL.

Antibody validated: Western Blot in mouse samples and Immunofluorescence in human samples. All other applications and species not yet tested. Optimal dilutions for each application should be determined by the researcher.

Anti-NOD3 NLRC3 Antibody (A07242) Images



Western blot analysis of NOD3 in 3T3 cell lysate with NOD3 antibody at (A) 1 and (B) 2 ug/mL.



Immunofluorescence of NOD3 in Jurkat cells with NOD3 antibody at 20 ug/mL.

Submit a product review to Biocompare.com

Submit a review of this product to Biocompare.com to receive a \$20 Amazon.com giftcard! Your reviews help your fellow scientists make the right decisions. Thank you for your contribution.



Anti-NOD3 NLRC3 Antibody

For Research Use Only. Not for use in diagnostic procedures.