

Anti-AP3D1/Ap3 Antibody

Catalog Number: A07250

About AP3D1

AP3D1 (also known as Delta-adaptin 3, AP-3 complex delta subunit and Delta-adaptin) is a subunit of the AP3 adaptor-like complex, which is not associated with clathrin. The AP3D1 subunit is implicated in intracellular biogenesis and trafficking of pigment granules and possibly platelet dense granules and neurotransmitter vesicles.

Overview

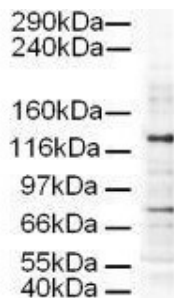
Product Name	Anti-AP3D1/Ap3 Antibody
Reactive Species	Human
Description	Boster Bio Anti-AP3D1/Ap3 Antibody (Catalog # A07250). Tested in ELISA, WB applications. This antibody reacts with Human.
Application	ELISA, IP, WB
Clonality	Polyclonal
Formulation	0.02 M Potassium Phosphate, 0.15 M Sodium Chloride, pH 7.2, 0.01% (w/v) Sodium Azide
Storage Instructions	Store vial at -20°C prior to opening. Aliquot contents and freeze at -20°C or below for extended storage. Avoid cycles of freezing and thawing. Centrifuge product if not completely clear after standing at room temperature. This product is stable for several weeks at 4°C as an undiluted liquid. Dilute only prior to immediate use. Expiration date is one (1) year from date of opening. (Ship on dry ice.)
Host	Goat
Uniprot ID	O14617

Technical Details

Immunogen	This affinity purified antibody was prepared from whole goat serum produced by repeated immunizations with a synthetic peptide corresponding to an internal region near aa 675-700 of Human AP3D1.
Predicted Reactive Species	Chicken, Chimpanzee
Cross Reactivity	No cross reactivity with other proteins.
Isotype	IgG
Form	Liquid (sterile filtered)
Concentration	1.6 mg/mL by UV absorbance at 280 nm

Purification	This affinity purified antibody is directed against human AP3D1. The product was affinity purified from antiserum by immunoaffinity purification. A BLAST analysis was used to suggest reactivity with this protein from human, chimpanzee and chicken based on 100% homology for the immunogen sequence. Cross-reactivity with AP3D1 protein from mouse, rat, dog and cow may occur as sequence homology varies by only one amino acid residue in this sequence as indicated by BLAST analysis. Reactivity with AP3D1 proteins from other sources is not known.
Suggested Dilutions	ELISA: 1:5,000 - 1:20,000 IP: 1:100 WB: 1:500 - 1:2,000 This affinity purified antibody has been tested for use in ELISA and by western blot. Specific conditions for reactivity should be optimized by the end user. Expect a band approximately 130 kDa in size corresponding to AP3D1 by western blotting in the appropriate cell lysate or extract. Multiple isoforms exist for this protein.

Anti-AP3D1/Ap3 Antibody (A07250) Images



Western blot using Boster's Affinity Purified anti-AP3D1 antibody shows detection of a 130-kDa band corresponding to Human AP3D1 in a HeLa whole cell lysate. The lower molecular weight band most likely represents non-specific binding. Approximately 20 µg of lysate was run on a SDS-PAGE and transferred onto nitrocellulose followed by reaction with a 1:500 dilution of anti-AP3D1 antibody. Detection occurred using a 1:5,000 dilution of HRP-labeled Rabbit anti-Goat IgG for 1 hour at room temperature. A chemiluminescence system was used for signal detection (Roche) using a 30-sec exposure time.

Submit a product review to [Biocompare.com](https://www.biocompare.com)

Submit a review of this product to [Biocompare.com](https://www.biocompare.com) to receive a \$20 Amazon.com giftcard! Your reviews help your fellow scientists make the right decisions. Thank you for your contribution.



Anti-AP3D1/Ap3 Antibody

For Research Use Only. Not for use in diagnostic procedures.