

Anti-WDR35 Antibody

Catalog Number: A07256

About WDR35

WD40 repeats are a common structural module in eukaryotic proteins, and proteins containing WD40 domains have a wide range of functions, including signal transduction, cell cycle regulation, RNA splicing, and transcription. One such protein, WDR35, also known as CED2, has been shown to be mutated in patients with Sensenbrenner syndrome/cranioectodermal dysplasia (CED), an autosomal-recessive disease that is characterized by craniosynostosis and ectodermal and skeletal abnormalities. WDR35 localizes to cilia and centrosomes during embryogenesis and human and mouse fibroblasts that lack this gene fail to produce cilia. Mutations in this gene can also cause short-rib polydactyly syndromes due to abnormal ciliogenesis.

Overview

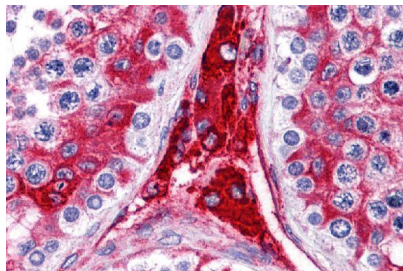
Product Name	Anti-WDR35 Antibody
Reactive Species	Human
Description	Boster Bio Anti-WDR35 Antibody (Catalog # A07256). Tested in ELISA, IHC-P applications. This antibody reacts with Human.
Application	ELISA, IHC-P
Clonality	Polyclonal
Formulation	WDR35 Antibody is supplied in PBS containing 0.02% sodium azide.
Storage Instructions	WDR35 antibody can be stored at 4°C for three months and -20°C, stable for up to one year. Avoid repeated freeze-thaw cycles. Antibodies should not be exposed to prolonged high temperatures.
Host	Rabbit
Uniprot ID	Q9P2L0

Technical Details

Immunogen	WDR35 antibody was raised against a 16 amino acid synthetic peptide near the amino terminus of human WDR35. The immunogen is located within amino acids 60 - 110 of WDR35.
Predicted Reactive Species	Mouse, Rat
Cross Reactivity	WDR35 antibody is human specific.
Isotype	IgG
Form	Liquid
Concentration	1 mg/mL

Purification	WDR35 Antibody is affinity chromatography purified via peptide column.
Suggested Dilutions	WDR35 antibody can be used for detection of WDR35 by immunohistochemistry at 5 ug/mL. Antibody validated: Immunohistochemistry in human samples. All other applications and species not yet tested. Optimal dilutions for each application should be determined by the researcher.

Anti-WDR35 Antibody (A07256) Images



Immunohistochemistry of WDR35 in human testis tissue with WDR35 antibody at 5 ug/mL.

Submit a product review to Biocompare.com

Submit a review of this product to Biocompare.com to receive a \$20 Amazon.com giftcard! Your reviews help your fellow scientists make the right decisions. Thank you for your contribution.



Anti-WDR35 Antibody

For Research Use Only. Not for use in diagnostic procedures.