

Anti-UEV1A UBE2V1 Antibody

Catalog Number: A07266

About UBE2V1

Ubiquitin-conjugating enzyme E2 (UEV1) was initially discovered as a protein similar in sequence and structure to the E2 ubiquitin-conjugating enzymes but lacking their enzymatic activity. There are at least two variants and multiple isoforms of UEV1. In particular, UEV1A (Ubiquitin-conjugating enzyme E2 variant 1 isoform A) has recently been shown to be an important component of the Toll-like receptor and IL-1R signaling pathway. Signals from these pathways are relayed by a number of downstream molecules such as MyD88 and tumor necrosis factor receptor associated factor (TRAF6), ultimately activating various kinases and transcription factors. UEV1A is part of a dimeric ubiquitin-conjugating enzyme complex also containing Ubc13 (ubiquitin-conjugating enzyme 13) that together with TRAF6 activates TAK1, a member of the mitogen-activated protein kinase kinase kinase family. The Ubc13-UEV1A complex also mediates the Lys-63 ubiquitination of TRAF-6, and this ubiquitination is essential for TAK1 activation.

Overview

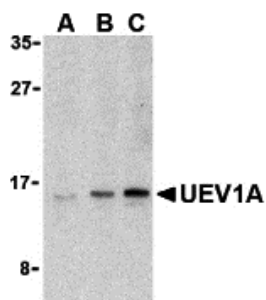
Product Name	Anti-UEV1A UBE2V1 Antibody
Reactive Species	Human, Mouse, Rat
Description	Boster Bio Anti-UEV1A UBE2V1 Antibody (Catalog # A07266). Tested in ELISA, WB applications. This antibody reacts with Human, Mouse, Rat.
Application	ELISA, WB
Clonality	Polyclonal
Formulation	UEV1A Antibody is supplied in PBS containing 0.02% sodium azide.
Storage Instructions	UEV1A antibody can be stored at 4°C for three months and -20°C, stable for up to one year. Avoid repeated freeze-thaw cycles. Antibodies should not be exposed to prolonged high temperatures.
Host	Rabbit
Uniprot ID	Q13404

Technical Details

Immunogen	UEV1A antibody was raised against a peptide corresponding to 15 amino acids near the C-terminus of human UEV1A. The immunogen is located within the last 50 amino acids of UEV1A.
Predicted Reactive Species	Bovine, Chicken
Cross Reactivity	Anti-UEV1A may also recognize other isoforms of UEV1A.
Isotype	IgG
Form	Liquid

Concentration	1 mg/mL
Purification	UEV1A Antibody is Ion exchange chromatography purified.
Suggested Dilutions	UEV1A antibody can be used for detection of UEV1A by Western blot at 1 to 4 ug/mL. Antibody validated: Western Blot in human samples. All other applications and species not yet tested. Optimal dilutions for each application should be determined by the researcher.

Anti-UEV1A UBE2V1 Antibody (A07266) Images



Western blot analysis of UEV1A in Jurkat cell lysates with UEV1A antibody at (A) 1, (B) 2, and (C) 4 ug/mL.

Submit a product review to Biocompare.com

Submit a review of this product to Biocompare.com to receive a \$20 Amazon.com giftcard! Your reviews help your fellow scientists make the right decisions. Thank you for your contribution.



Anti-UEV1A UBE2V1 Antibody

For Research Use Only. Not for use in diagnostic procedures.