

## Anti-Nanos homolog 1 Nanos1 Antibody

Catalog Number: A07276

### About NANOS1

Nanos1 is one of three known mammalian homologs to the Drosophila gene nanos. Nanos1 is an RNA-binding protein containing a zinc-finger motif and is expressed in the developing nervous system and continues in the adult brain. Interestingly, unlike mice deficient in either nanos2 or nanos3, mice lacking the nanos1 gene develop normally with no sign of abnormalities. Recently it has been found that expression of nanos1 mRNA is down-regulated by E-cadherin in a human breast cancer cell line and the amino-terminal domain on Nanos1 interacts with the E-cadherin-binding protein p120ctn. Furthermore, overexpression of Nanos1 in human colorectal DLD1 cancer cells functionally abolished cell-cell adhesion, allowing the cancer cells to develop strong migratory and invasive properties. These results suggest that targeting Nanos1 might prove an effective strategy in the treatment of E-cadherin-negative tumors.

### Overview

Product Name	Anti-Nanos homolog 1 Nanos1 Antibody
Reactive Species	Human
Description	Boster Bio Anti-Nanos homolog 1 Nanos1 Antibody (Catalog # A07276). Tested in ELISA, WB, IHC-P, IF applications. This antibody reacts with Human.
Application	ELISA, IF, IHC-P, WB
Clonality	Polyclonal
Formulation	Nanos1 Antibody is supplied in PBS containing 0.02% sodium azide.
Storage Instructions	Nanos1 antibody can be stored at 4°C for three months and -20°C, stable for up to one year. Avoid repeated freeze-thaw cycles. Antibodies should not be exposed to prolonged high temperatures.
Host	Rabbit
Uniprot ID	Q8WY41

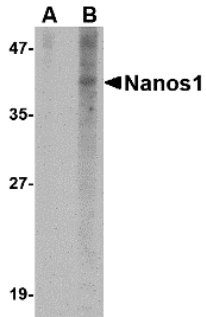
### Technical Details

Immunogen	Nanos1 antibody was raised against a 17 amino acid synthetic peptide from near the amino terminus of human Nanos1. The immunogen is located within the first 50 amino acids of Nanos1.
Predicted Reactive Species	Mouse
Isotype	IgG
Form	Liquid
Concentration	1 mg/mL
Purification	Nanos1 Antibody is affinity chromatography purified via peptide column.

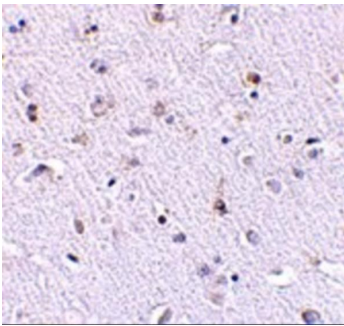
Suggested Dilutions

Nanos1 antibody can be used for detection of Nanos1 by Western blot at 1 ug/mL. Antibody can also be used for immunohistochemistry starting at 2.5 ug/mL. For immunofluorescence start at 20 ug/mL. Antibody validated: Western Blot in human samples; Immunohistochemistry in human samples and Immunofluorescence in human samples. All other applications and species not yet tested. Optimal dilutions for each application should be determined by the researcher.

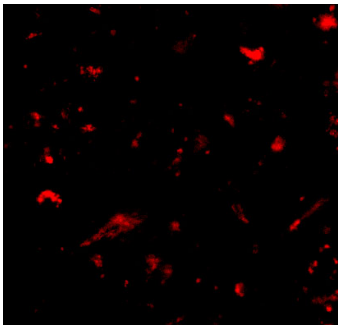
## Anti-Nanos homolog 1 Nanos1 Antibody (A07276) Images



Western blot analysis of Nanos1 in SK-N-SH cell lysate with Nanos1 antibody at 1 ug/mL in (A) the presence and (B) the absence of blocking peptide.



Immunohistochemistry of Nanos1 in human brain tissue with Nanos1 antibody at 2.5 ug/mL



Immunofluorescence of nanos1 in human brain tissue with nanos1 antibody at 20 ug/mL.

### Submit a product review to [Biocompare.com](https://www.biocompare.com)

Submit a review of this product to [Biocompare.com](https://www.biocompare.com) to receive a \$20 Amazon.com giftcard! Your reviews help your fellow scientists make the right decisions. Thank you for your contribution.



Anti-Nanos homolog 1 Nanos1 Antibody

For Research Use Only. Not for use in diagnostic procedures.