

Anti-Spindlin-1 SPIN1 Antibody

Catalog Number: A07281

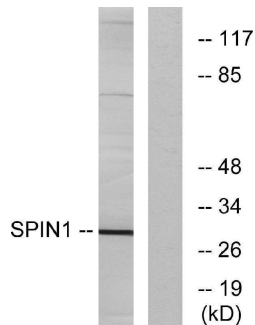
Overview

Product Name	Anti-Spindlin-1 SPIN1 Antibody
Reactive Species	Human, Mouse, Rat
Description	Boster Bio Anti-Spindlin-1 SPIN1 Antibody catalog # A07281. Tested in WB, IHC, IF, ELISA applications. This antibody reacts with Human, Mouse, Rat.
Application	ELISA, IF, IHC, WB
Clonality	Polyclonal
Formulation	Liquid in PBS containing 50% glycerol, 0.5% stabilizing protein and 0.02% sodium azide. This antibody is supplied in a stabilized formulation. Compatibility with conjugation reactions depends on the chemistry of the conjugation method used. For conjugation methods that are not compatible with the stabilizing components present in this formulation, a carrier-free antibody format is required.
Storage Instructions	Store at -20°C for one year. For short term storage and frequent use, store at 4°C for up to one month. Avoid repeated freeze-thaw cycles.
Host	Rabbit
Uniprot ID	Q9Y657

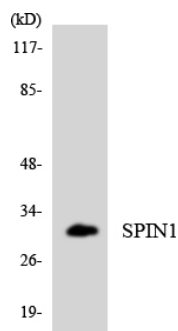
Technical Details

Immunogen	The antiserum was produced against synthesized peptide derived from human SPIN1. AA range:111-160
Isotype	IgG
Form	Liquid
Concentration	1 mg/ml
Purification	Immunogen affinity purified
Suggested Dilutions	WB 1:500-1:2000 IHC 1:100-1:300 IF 1:200-1:1000 ELISA 1:20000

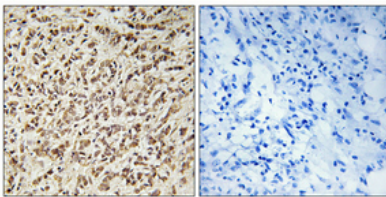
Anti-Spindlin-1 SPIN1 Antibody (A07281) Images



Western blot analysis of lysates from HeLa cells, using SPIN1 Antibody. The lane on the right is blocked with the synthesized peptide.



Western blot analysis of the lysates from K562 cells using SPIN1 antibody.



Immunohistochemical analysis of paraffin-embedded Human breast cancer. Antibody was diluted at 1:100 (4° overnight). High-pressure and temperature Tris-EDTA, pH8.0 was used for antigen retrieval. Negative control (right) obtained from antibody was pre-absorbed by immunogen peptide.



Immunofluorescence analysis of HeLa cell. 1, Spindlin-1 Polyclonal Antibody (red) was diluted at 1:200 (4° overnight). Bcl-2 Monoclonal Antibody (6B5) (green) was diluted at 1:200 (4° overnight). 2, Goat Anti Rabbit Alexa Fluor 594 was diluted at 1:1000 (room temperature, 50min). Goat Anti Mouse Alexa Fluor 488 was diluted at 1:1000 (room temperature, 50min).

Submit a product review to Biocompare.com

Submit a review of this product to Biocompare.com to receive a \$20 Amazon.com giftcard! Your reviews help your fellow scientists make the right decisions. Thank you for your contribution.



Anti-Spindlin-1 SPIN1 Antibody

For Research Use Only. Not for use in diagnostic procedures.