

Anti-PBK1 RSL1D1 Antibody

Catalog Number: A07282

About RSL1D1

PBK1 protein (also known as Ribosomal L1 domain-containing protein 1, cellular senescence-inhibited gene protein, and CATX-11) was isolated from highly invasive first trimester trophoblast cells and has been proposed to regulate their naturally occurring invasive behavior (Huch et al., 1998). PBK1 was also found to be over-expressed in non-small-cell lung cancer (NSCLC) cells (Petroziello et al., 2004). A recent study suggests that PBK1 may up-regulate the urokinase-type plasminogen activator (uPA) gene, which plays an important role in cellular matrix degradation and activation of other protease systems involved in cell invasion (Tong et al., 2005). The cellular localization dynamics of PBK1, as well as the data from its yeast homologue (Cic1p/Nsa3p) suggest that PBK1 is essential for ribosome biogenesis (Fatica et al., 2003). Thus, PBK1 could be controlling cell proliferation by regulating the level of ribosome production. It is hypothesized that PBK1 is involved in regulating both, cell proliferation and invasiveness, therefore playing a dual function in cancer cells transformation.

Overview

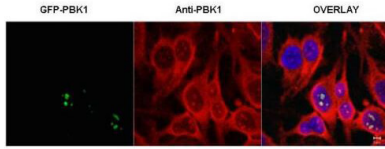
Product Name	Anti-PBK1 RSL1D1 Antibody
Reactive Species	Human
Description	Boster Bio Anti-PBK1 RSL1D1 Antibody (Catalog # A07282). Tested in ELISA, IF, WB applications. This antibody reacts with Human.
Application	ELISA, IP, IF, WB
Clonality	Polyclonal
Formulation	0.02 M Potassium Phosphate, 0.15 M Sodium Chloride, pH 7.2, 0.01% (w/v) Sodium Azide
Storage Instructions	Store vial at -20°C prior to opening. Aliquot contents and freeze at -20°C or below for extended storage. Avoid cycles of freezing and thawing. Centrifuge product if not completely clear after standing at room temperature. This product is stable for several weeks at 4°C as an undiluted liquid. Dilute only prior to immediate use. Expiration date is one (1) year from date of opening. (Ship on dry ice.)
Host	Rabbit
Uniprot ID	O76021

Technical Details

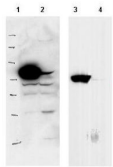
Immunogen	This affinity purified antibody was prepared from whole rabbit serum produced by repeated immunizations with a synthetic peptide corresponding to an internal sequence of human PBK1.
Predicted Reactive Species	Chicken, Chimpanzee
Cross Reactivity	No cross reactivity with other proteins.
Isotype	IgG

Form	Liquid (sterile filtered)
Concentration	1.1 mg/mL by UV absorbance at 280 nm
Purification	This product was affinity purified from monospecific antiserum by immunoaffinity chromatography. This antibody is specific for human PBK1 protein. A BLAST analysis was used to suggest limited cross-reactivity with PBK1 from mouse based on a 75% homology with the immunizing sequence. Cross-reactivity with PBK1 from other sources has not been determined.
Suggested Dilutions	ELISA: 1:2,500 - 1:10,000 IF Microscopy: 1:100 IP: 1:100 WB: 1:500 - 1:2,000 This affinity purified antibody has been tested for use in ELISA, immunoprecipitation, immunofluorescence microscopy and western blotting. Specific conditions for reactivity should be optimized by the end user. Expect a band approximately 55 kDa in size corresponding to PBK1 by western blotting in the appropriate cell lysate or extract. This antibody is capable of detecting both over-expressed and endogenous PBK1. For immunofluorescence microscopy, fix cells with methanol.

Anti-PBK1 RSL1D1 Antibody (A07282) Images



Immunofluorescence microscopy of HeLa cells transfected with GFP-PBK1. In the overlay, specific antibody staining is shown to co-localize with recombinant protein. Cells were fixed with methanol prior to staining. Personal communication, J. McNally and D. Stavreva, NCI, Bethesda, MD.



Western blot using Boster's affinity purified anti-PBK1 antibody shows detection of over-expressed PBK1 in lysates from HeLa cells transfected with Flag-PBK1. Lanes 1 and 3 contain lysate from Flag-PBK1 transfected HeLa cells. Lanes 2 and 4 contain lysate from cells transfected with null vector. Lanes 1 and 2 were blotted with anti-Flag antibody. Lanes 3 and 4 were probed with a 1:500 dilution of anti-PBK1. The band at 75 kDa, indicated by the arrowhead, corresponds to PBK1. Personal communication, J. McNally and D. Stavreva, NCI, Bethesda, MD.

Submit a product review to Biocompare.com

Submit a review of this product to Biocompare.com to receive a \$20 Amazon.com giftcard! Your reviews help your fellow scientists make the right decisions. Thank you for your contribution.



Anti-PBK1 RSL1D1 Antibody

For Research Use Only. Not for use in diagnostic procedures.