

## Anti-Rsl1d1 Antibody Picoband®

Catalog Number: A07282-2

### About Rsl1d1

Ribosomal L1 domain-containing protein 1 is a protein that in humans is encoded by the RSL1D1 gene. Predicted to enable mRNA 3'-UTR binding activity and mRNA 5'-UTR binding activity. Predicted to be involved in maturation of LSU-rRNA; regulation of apoptotic process; and regulation of cellular senescence. Predicted to act upstream of or within regulation of protein localization. Located in nucleolus. Is expressed in several structures, including eye; genitourinary system; liver; lung; and spleen. Orthologous to human RSL1D1 (ribosomal L1 domain containing 1).

### Overview

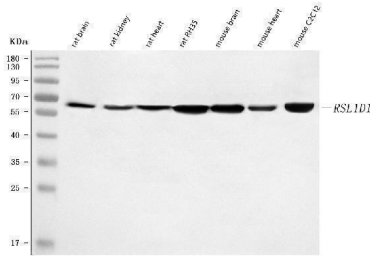
Product Name	Anti-Rsl1d1 Antibody Picoband®
Reactive Species	Mouse, Rat
Description	Boster Bio Anti-Rsl1d1 Antibody Picoband® catalog # A07282-2. Tested in ELISA, WB applications. This antibody reacts with Mouse, Rat. The brand Picoband indicates this is a premium antibody that guarantees superior quality, high affinity, and strong signals with minimal background in Western blot applications. Only our best-performing antibodies are designated as Picoband, ensuring unmatched performance.
Application	ELISA, WB
Clonality	Polyclonal
Formulation	Each vial contains 4 mg Trehalose, 0.9 mg NaCl, 0.2 mg Na <sub>2</sub> HPO <sub>4</sub> .
Storage Instructions	At -20°C for one year from date of receipt. After reconstitution, at 4°C for one month. It can also be aliquotted and stored frozen at -20°C for six months. Avoid repeated freezing and thawing.
Host	Rabbit
Uniprot ID	Q8BVY0

### Technical Details

Immunogen	E.coli-derived mouse Rsl1d1 recombinant protein (Position: E62-N452).
Recommended Detection Systems	Boster recommends Enhanced Chemiluminescent Kit with anti-Rabbit IgG (EK1002) for Western blot.
Cross Reactivity	No cross-reactivity with other proteins.
Isotype	Rabbit IgG
Form	Lyophilized
Concentration	Adding 0.2 ml of distilled water will yield a concentration of 500 µg/ml.

Purification	Immunogen affinity purified.
Suggested Dilutions	Western blot, 0.1-0.25 ug/ml, Mouse, Rat ELISA, 0.1-0.5 ug/ml, -

## Anti-Rsl1d1 Antibody Picoband® (A07282-2) Images



Western blot analysis of Rsl1d1 using anti-Rsl1d1 antibody (A07282-2). Electrophoresis was performed on a 5-20% SDS-PAGE gel at 70V (Stacking gel) / 90V (Resolving gel) for 2-3 hours. The sample well of each lane was loaded with 30 ug of sample under reducing conditions. Lane 1: rat brain tissue lysates, Lane 2: rat kidney tissue lysates, Lane 3: rat heart tissue lysates, Lane 4: rat RH35 whole cell lysates, Lane 5: mouse brain tissue lysates, Lane 6: mouse heart tissue lysates, Lane 7: mouse C2C12 whole cell lysates. After electrophoresis, proteins were transferred to a nitrocellulose membrane at 150 mA for 50-90 minutes. Blocked the membrane with 5% non-fat milk/TBS for 1.5 hour at RT. The membrane was incubated with rabbit anti-Rsl1d1 antigen affinity purified polyclonal antibody (Catalog # A07282-2) at 0.25 ug/mL overnight at 4°C, then washed with TBS-0.1%Tween 3 times with 5 minutes each and probed with a goat anti-rabbit IgG-HRP secondary antibody at a dilution of 1:5000 for 1.5 hour at RT. The signal is developed using an Enhanced Chemiluminescent detection (ECL) kit (Catalog # EK1002) with Tanon 5200 system. A specific band was detected for Rsl1d1 at approximately 65 kDa. The expected band size for Rsl1d1 is at 54,55 kDa.

### Submit a product review to [Biocompare.com](https://www.biocompare.com)

Submit a review of this product to [Biocompare.com](https://www.biocompare.com) to receive a \$20 Amazon.com giftcard! Your reviews help your fellow scientists make the right decisions. Thank you for your contribution.



### Anti-Rsl1d1 Antibody

For Research Use Only. Not for use in diagnostic procedures.