

Anti-SLC38A4 Antibody

Catalog Number: A07283

About SLC38A4

SLC38A4 is found predominantly in liver and transports both cationic and neutral amino acids (1,2). The transport of cationic amino acids by SLC38A4 is sodium and pH independent, while the transport of neutral amino acids is sodium and pH dependent (2). Recent evidence suggests that SLC38A4 functions as a regulator of protein synthesis downstream of the hepatocyte nuclear factor 4a during liver development (3). It has also been suggested that SLC38A4 has ATPase activity and is critically involved in the maintenance of mitochondrial homeostasis and cell survival (4).

Overview

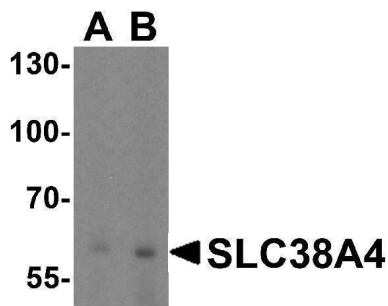
Product Name	Anti-SLC38A4 Antibody
Reactive Species	Human, Mouse
Description	Boster Bio Anti-SLC38A4 Antibody (Catalog # A07283). Tested in ELISA, WB, IHC-P applications. This antibody reacts with Human, Mouse.
Application	ELISA, IHC-P, WB
Clonality	Polyclonal
Formulation	SLC38A4 Antibody is supplied in PBS containing 0.02% sodium azide.
Storage Instructions	SLC38A4 antibody can be stored at 4°C for three months and -20°C, stable for up to one year.
Host	Rabbit
Uniprot ID	Q96916

Technical Details

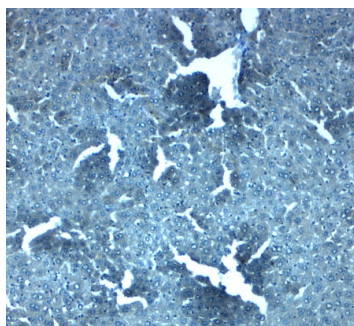
Immunogen	SLC38A4 antibody was raised against an 18 amino acid peptide from near the center of human SLC38A4. The immunogen is located within amino acids 270 - 320 of SLC38A4.
Predicted Reactive Species	Rat
Cross Reactivity	SLC38A4 antibody is human and mouse reactive. SLC38A4 will not cross-react with other members of the SLC38 protein family.
Isotype	IgG
Form	Liquid
Concentration	1 mg/mL
Purification	SLC38A4 Antibody is affinity chromatography purified via peptide column.
Suggested Dilutions	SLC38A4 antibody can be used for the detection of SLC38A4 by Western blot at 1 - 2 ug/mL.

Antibody can also be used for immunohistochemistry starting at 2.5 ug/mL.
Antibody validated: Western Blot in mouse samples and Immunohistochemistry in mouse samples.
All other applications and species not yet tested. Optimal dilutions for each application should be determined by the researcher.

Anti-SLC38A4 Antibody (A07283) Images



Western blot analysis of SLC38A4 in mouse kidney tissue lysate with SLC38A4 antibody at (A) 1 and (B) 2 ug/ml.



Immunohistochemistry of SLC38A4 in mouse liver tissue with SLC38A4 antibody at 2.5 ug/mL.

Submit a product review to Biocompare.com

Submit a review of this product to Biocompare.com to receive a \$20 Amazon.com giftcard! Your reviews help your fellow scientists make the right decisions. Thank you for your contribution.



Anti-SLC38A4 Antibody

For Research Use Only. Not for use in diagnostic procedures.