

Anti-Importin subunit alpha-7 KPNA6 Antibody

Catalog Number: A07295

About KPNA6

Karyopherin, a cytosolic and heterodimeric protein complex consisting of alpha and beta subunits, is responsible for targeting proteins with nuclear localization signals to the nuclear pore complex (NPC) by an energy requiring, Ran-dependent mechanism. The alpha subunit and imported substrate enter the nucleus and accumulate in the nucleoplasm, while the beta subunit accumulates at the NPC. KPNA6 belongs to a subfamily within the KPNA family that also includes IPOA5&6. Down-regulation of KPNA6 by RNAi expression in HeLa cells strongly inhibited cell proliferation, possibly due to blocking the nuclear import of specific factors essential for cell growth and proliferation. KPNA6 also interacts with the Rev protein of HIV-1 and promote its nuclear import.

Overview

Product Name	Anti-Importin subunit alpha-7 KPNA6 Antibody
Reactive Species	Human, Mouse, Rat
Description	Boster Bio Anti-Importin subunit alpha-7 KPNA6 Antibody (Catalog # A07295). Tested in ELISA, WB, IF applications. This antibody reacts with Human, Mouse, Rat.
Application	ELISA, IF, WB
Clonality	Polyclonal
Formulation	KPNA6 Antibody is supplied in PBS containing 0.02% sodium azide.
Storage Instructions	KPNA6 antibody can be stored at 4°C for three months and -20°C, stable for up to one year. Avoid repeated freeze-thaw cycles. Antibodies should not be exposed to prolonged high temperatures.
Host	Rabbit
Uniprot ID	O60684

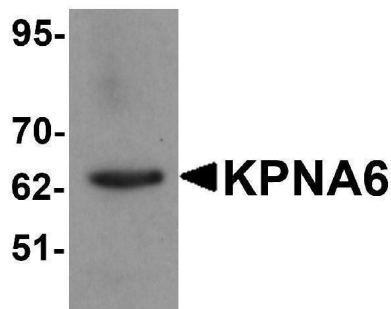
Technical Details

Immunogen	KPNA6 antibody was raised against a 13 amino acid synthetic peptide near the amino terminus of human KPNA6. The immunogen is located within amino acids 70 - 120 of KPNA6.
Predicted Reactive Species	Bovine
Isotype	IgG
Form	Liquid
Concentration	1 mg/mL
Purification	KPNA6 Antibody is affinity chromatography purified via peptide column.

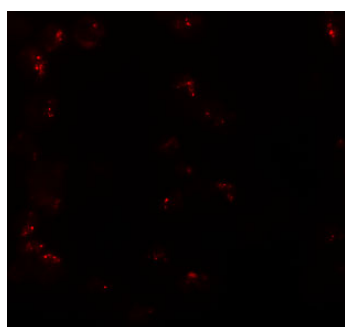
Suggested Dilutions

KPNA6 antibody can be used for detection of KPNA6 by Western blot at 1 ug/mL. Antibody can also be used for immunofluorescence starting at 20 ug/mL. For immunofluorescence start at 20 ug/mL. Antibody validated: Western Blot in human samples and Immunofluorescence in human samples. All other applications and species not yet tested. Optimal dilutions for each application should be determined by the researcher.

Anti-Importin subunit alpha-7 KPNA6 Antibody (A07295) Images



Western blot analysis of KPNA6 in 293 cell lysate with KPNA6 antibody at 1 ug/mL.



Immunofluorescence of KPNA6 in 293 cells with KPNA6 antibody at 20 ug/mL.

Submit a product review to Biocompare.com

Submit a review of this product to Biocompare.com to receive a \$20 Amazon.com giftcard! Your reviews help your fellow scientists make the right decisions. Thank you for your contribution.



Anti-Importin subunit alpha-7 KPNA6 Antibody

For Research Use Only. Not for use in diagnostic procedures.