

## Anti-MESP1 Antibody Picoband®

Catalog Number: A07301-2

### About MESP1

Mesoderm posterior 1 homolog (mouse) is a protein that in humans is encoded by the MESP1 gene. It is mapped to 15q26.1. MESP1 is a transcription factor that regulates cardiovascular progenitor specification. The MESP1 gene encodes a member of the basic helix-loop-helix (bHLH) family of transcriptional regulatory proteins that may play a role in the development of nascent mesoderm.

### Overview

Product Name	Anti-MESP1 Antibody Picoband®
Reactive Species	Human
Description	Boster Bio Anti-MESP1 Antibody Picoband® catalog # A07301-2. Tested in ELISA, WB applications. This antibody reacts with Human. The brand Picoband indicates this is a premium antibody that guarantees superior quality, high affinity, and strong signals with minimal background in Western blot applications. Only our best-performing antibodies are designated as Picoband, ensuring unmatched performance.
Application	ELISA, WB
Clonality	Polyclonal
Formulation	Each vial contains 4mg Trehalose, 0.9mg NaCl, 0.2mg Na <sub>2</sub> HPO <sub>4</sub> , 0.05mg NaN <sub>3</sub> .
Storage Instructions	Store at -20°C for one year from date of receipt. After reconstitution, at 4°C for one month. It can also be aliquotted and stored frozen at -20°C for six months. Avoid repeated freeze-thaw cycles.
Host	Rabbit
Uniprot ID	Q9BRJ9

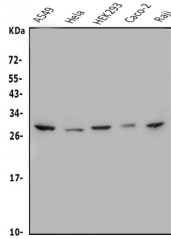
### Technical Details

Immunogen	E.coli-derived human MESP1 recombinant protein (Position: M1-K268).
Recommended Detection Systems	Boster recommends Enhanced Chemiluminescent Kit with anti-Rabbit IgG (EK1002) for Western blot.
Cross Reactivity	No cross-reactivity with other proteins.
Isotype	Rabbit IgG
Form	Lyophilized
Concentration	Adding 0.2 ml of distilled water will yield a concentration of 500 ug/ml.
Purification	Immunogen affinity purified.

Suggested Dilutions

Western blot, 0.25-0.5ug/ml, Human  
ELISA, 0.1-0.5ug/ml, -

## Anti-MESP1 Antibody Picoband® (A07301-2) Images



Western blot analysis of MESP1 using anti-MESP1 antibody (A07301-2). Electrophoresis was performed on a 5-20% SDS-PAGE gel at 70V (Stacking gel) / 90V (Resolving gel) for 2-3 hours. The sample well of each lane was loaded with 50ug of sample under reducing conditions. Lane 1: human A549 whole cell lysates, Lane 2: human HeLa whole cell lysates, Lane 3: human HEK293 whole cell lysates, Lane 4: human Caco-2 whole cell lysates, Lane 5: human Raji whole cell lysates. After Electrophoresis, proteins were transferred to a Nitrocellulose membrane at 150mA for 50-90 minutes. Blocked the membrane with 5% Non-fat Milk/ TBS for 1.5 hour at RT. The membrane was incubated with rabbit anti-MESP1 antigen affinity purified polyclonal antibody (Catalog # A07301-2) at 0.5 ug/mL overnight at 4°C, then washed with TBS-0.1%Tween 3 times with 5 minutes each and probed with a goat anti-rabbit IgG-HRP secondary antibody at a dilution of 1:5000 for 1.5 hour at RT. The signal is developed using an Enhanced Chemiluminescent detection (ECL) kit (Catalog # EK1002) with Tanon 5200 system. A specific band was detected for MESP1 at approximately 29KD. The expected band size for MESP1 is at 29KD.

### Submit a product review to [Biocompare.com](https://www.biocompare.com)

Submit a review of this product to [Biocompare.com](https://www.biocompare.com) to receive a \$20 Amazon.com giftcard! Your reviews help your fellow scientists make the right decisions. Thank you for your contribution.



Anti-MESP1 Antibody

For Research Use Only. Not for use in diagnostic procedures.