

Anti-UBE2L6 Antibody

Catalog Number: A07315

Overview

Product Name	Anti-UBE2L6 Antibody
Reactive Species	Human, Mouse, Rat
Description	Boster Bio Anti-UBE2L6 Antibody catalog # A07315. Tested in WB,ICC/IF applications. This antibody reacts with Human,Mouse,Rat.
Application	IF, ICC, WB
Clonality	Polyclonal
Formulation	Rabbit IgG, 1mg/ml in PBS with 0.02% sodium azide, 50% glycerol, pH7.2
Storage Instructions	Store at -20°C for one year. For short term storage and frequent use, store at 4°C for up to one month. Avoid repeated freeze-thaw cycles.
Host	Rabbit
Uniprot ID	O14933

Technical Details

Immunogen	A synthetic peptide of human UBE2L6(NP_004214.1).
Isotype	IgG
Form	Liquid
Concentration	1 mg/ml
Purification	The antibody was affinity-purified from rabbit antiserum by affinity-chromatography using epitope-specific immunogen and the purity is > 95% (by SDS-PAGE).
Suggested Dilutions	WB: 1:500-1:2000 ICC/IF: 1:50-1:200

Anti-UBE2L6 Antibody (A07315) Images

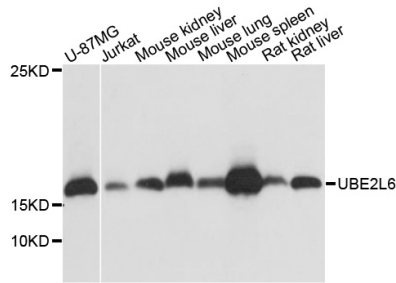


Figure 1. Western blotting validation for Anti-UBE2L6 Antibody A07315

Western blot analysis of extracts of various cell lines

Submit a product review to Biocompare.com

Submit a review of this product to Biocompare.com to receive a \$20 Amazon.com giftcard! Your reviews help your fellow scientists make the right decisions. Thank you for your contribution.



Anti-UBE2L6 Antibody