

Anti-UBE2L6 Antibody (N-term)

Catalog Number: A07315-1

About UBE2L6

The modification of proteins with ubiquitin is an important cellular mechanism for targeting abnormal or short-lived proteins for degradation. Ubiquitination involves at least three classes of enzymes: ubiquitin-activating enzymes (E1s), ubiquitin-conjugating enzymes (E2s) and ubiquitin-protein ligases (E3s). UBE2L6 is a member of the E2 ubiquitin-conjugating enzyme family. This enzyme is demonstrated to function in the E6/E6-ap-induced ubiquitination of p53.

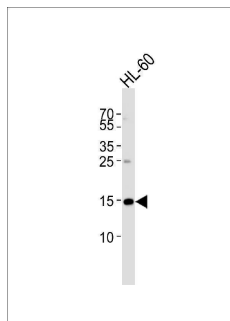
Overview

Product Name	Anti-UBE2L6 Antibody (N-term)
Reactive Species	Human
Description	Boster Bio Anti-UBE2L6 Antibody (N-term) (Catalog # A07315-1). Tested in WB, IHC-P application(s). This antibody reacts with Human.
Application	IHC-P, WB
Clonality	Polyclonal
Formulation	Purified polyclonal antibody supplied in PBS with 0.09% (W/V) sodium azide.
Storage Instructions	Maintain refrigerated at 2-8°C for up to 2 weeks. For long-term storage, store at -20°C in small aliquots to prevent freeze-thaw cycles.
Host	Rabbit
Uniprot ID	O14933

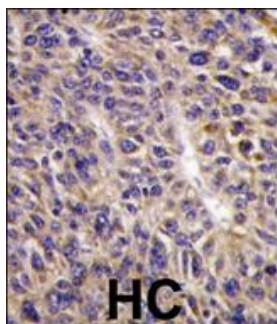
Technical Details

Immunogen	This UBE2L6 antibody is generated from rabbits immunized with a KLH conjugated synthetic peptide between 1-30 amino acids from the N-terminal region of human UBE2L6.
Predicted Reactive Species	Bovine, Mouse, Pig
Isotype	Rabbit IgG
Purification	This antibody is prepared by Saturated Ammonium Sulfate (SAS) precipitation followed by dialysis against PBS.
Suggested Dilutions	WB: 1:1000 IHC-P: 1:50-1:100

Anti-UBE2L6 Antibody (N-term) (A07315-1) Images



Western blot analysis of lysate from HL-60 cell line, using UBE2L6 Antibody (M1). UBE2L6 Antibody was diluted at 1:1000. A goat anti-rabbit IgG H&L (HRP) at 1:5000 dilution was used as the secondary antibody. Lysate at 35ug.



Formalin-fixed and paraffin-embedded human hepatocarcinoma reacted with UBE2L6 Antibody (N-term), which was peroxidase-conjugated to the secondary antibody, followed by DAB staining. This data demonstrates the use of this antibody for immunohistochemistry; clinical relevance has not been evaluated.

Submit a product review to [Biocompare.com](https://www.biocompare.com)

Submit a review of this product to [Biocompare.com](https://www.biocompare.com) to receive a \$20 Amazon.com giftcard! Your reviews help your fellow scientists make the right decisions. Thank you for your contribution.



Anti-UBE2L6 Antibody (N-term)

For Research Use Only. Not for use in diagnostic procedures.