

Anti-Centromere protein W CENPW Antibody

Catalog Number: A07351

About CENPW

CENPW was initially identified as a gene that was upregulated in multiple cancers, and whose overexpression in mouse fibroblast cells gave rise to distinct cancer-specific phenotypes. It was later found to be a nuclear protein that associated with CENPT, a component of CENPA nucleosome complex in the centromere, and is required for proper kinetochore function. CENPW also specifically interacts with the nucleolar phosphoprotein nucleophosmin, also known as B23. It has been suggested that nucleophosmin functions in the assembly of the kinetochore by interacting with CENPW during interphase. Overexpression of CENPW in the SKOV-3 human ovarian cancer cell line as well as in the zebrafish embryo led to apoptosis, suggesting that high levels of CENPW induces apoptotic cell death.

Overview

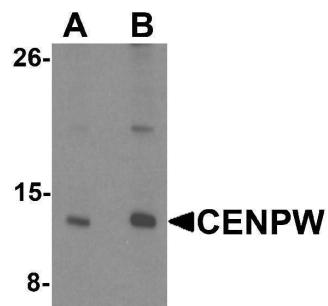
Product Name	Anti-Centromere protein W CENPW Antibody
Reactive Species	Human, Mouse, Rat
Description	Boster Bio Anti-Centromere protein W CENPW Antibody (Catalog # A07351). Tested in ELISA, WB applications. This antibody reacts with Human, Mouse, Rat.
Application	ELISA, WB
Clonality	Polyclonal
Formulation	CENPW Antibody is supplied in PBS containing 0.02% sodium azide.
Storage Instructions	CENPW antibody can be stored at 4°C for three months and -20°C, stable for up to one year. Avoid repeated freeze-thaw cycles. Antibodies should not be exposed to prolonged high temperatures.
Host	Rabbit
Uniprot ID	Q5EE01

Technical Details

Immunogen	CENPW antibody was raised against a 16 amino acid synthetic peptide near the amino terminus of human CENPW. The immunogen is located within the first 50 amino acids of CENPW.
Predicted Reactive Species	Mouse
Cross Reactivity	At least three isoforms of CENPW are known to exist; this antibody will detect all three isoforms.
Isotype	IgG
Form	Liquid
Concentration	1 mg/mL

Purification	CENPW Antibody is affinity chromatography purified via peptide column.
Suggested Dilutions	CENPW antibody can be used for detection of CENPW by Western blot at 0.5 - 1 ug/mL. Antibody validated: Western Blot in human samples. All other applications and species not yet tested. Optimal dilutions for each application should be determined by the researcher.

Anti-Centromere protein W CENPW Antibody (A07351) Images



Western blot analysis of CENPW in HeLa cell lysate lysate with CENPW antibody at (A) 0.5 and (B) 1 ug/mL.

Submit a product review to Biocompare.com

Submit a review of this product to Biocompare.com to receive a \$20 Amazon.com giftcard! Your reviews help your fellow scientists make the right decisions. Thank you for your contribution.



Anti-Centromere protein W CENPW Antibody

For Research Use Only. Not for use in diagnostic procedures.