

Anti-Bcl-B BCL2L10 Antibody

Catalog Number: A07380

About BCL2L10

Members in the Bcl-2 family are critical regulators of apoptosis by either inhibiting or promoting cell death. Bcl-B is a recently discovered anti-apoptotic member of the Bcl-2. Unlike the mouse homolog (also known as Diva/Boo) which is predominantly expressed in ovary and testis, the human Bcl-B protein is widely expressed. Also, the human Bcl-B functions by binding to and suppressing the apoptotic activity of Bax, whereas the mouse homolog binds Bak and also interacts with the apoptosis protein Apaf-1.

Overview

Product Name	Anti-Bcl-B BCL2L10 Antibody
Reactive Species	Human
Description	Boster Bio Anti-Bcl-B BCL2L10 Antibody (Catalog # A07380). Tested in ELISA, WB, ICC applications. This antibody reacts with Human.
Application	ELISA, ICC, WB
Clonality	Polyclonal
Formulation	Bcl-B Antibody is supplied in PBS containing 0.02% sodium azide.
Storage Instructions	Bcl-B antibody can be stored at 4°C for three months and -20°C, stable for up to one year. Avoid repeated freeze-thaw cycles. Antibodies should not be exposed to prolonged high temperatures.
Host	Rabbit
Uniprot ID	Q9HD36

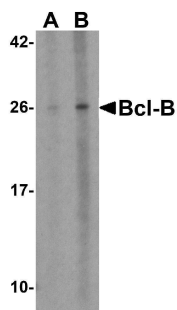
Technical Details

Immunogen	Bcl-B antibody was raised against a 16 amino acid synthetic peptide from near the amino terminus of human Bcl-B. The immunogen is located within amino acids 90 - 140 of Bcl-B.
Predicted Reactive Species	Mouse, Rat
Isotype	IgG
Form	Liquid
Concentration	1 mg/mL
Purification	Bcl-B Antibody is affinity chromatography purified via peptide column.
Suggested Dilutions	Bcl-B antibody can be used for the detection of Bcl-B by Western blot at 1 - 2 ug/mL. Despite its predicted molecular weight, Bcl-B is often at higher molecular weights, presumably due to post-translational modifications. Antibody can also be used for immunocytochemistry starting at 10

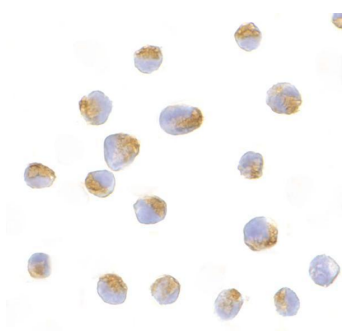
ug/mL.

Antibody validated: Western Blot in human samples and Immunocytochemistry in human samples.
All other applications and species not yet tested. Optimal dilutions for each application should be determined by the researcher.

Anti-Bcl-B BCL2L10 Antibody (A07380) Images



Western blot analysis of Bcl-B in Jurkat cell lysate with Bcl-B antibody at (A) 1 and (B) 2 ug/mL.



Immunocytochemistry of Bcl-B in Jurkat cells with Bcl-B antibody at 10 ug/mL.

Submit a product review to [Biocompare.com](https://www.biocompare.com)

Submit a review of this product to [Biocompare.com](https://www.biocompare.com) to receive a \$20 Amazon.com giftcard! Your reviews help your fellow scientists make the right decisions. Thank you for your contribution.



Anti-Bcl-B BCL2L10 Antibody

For Research Use Only. Not for use in diagnostic procedures.