

Anti-Cartilage matrix protein MATN1 Antibody

Catalog Number: A07385

About MATN1

Matrilins (MATNs) are a family of non-collagenous extra-cellular matrix (ECM) proteins consisting of four known members that have been proposed to play key roles in modulating cellular phenotypes during chondrogenesis of mesenchymal stem cells (MSCs). MATN1 and MATN3 are expressed specifically in cartilage and are among the most up-regulated ECM proteins during chondrogenesis. MATN1 is composed of two Willebrand Factor A (vWFA) domains separated by one EGF-like domain, whereas MATN3 is composed of a single N-terminal vWFA domain followed by four epidermal growth factor (EGF) repeats and a coiled-coil domain. MATN1 or MATN3 may play a role in modulating chondrogenesis during the chondrocyte differentiation process. Mutations of this gene have been associated with variety of inherited chondrodysplasias. Recent studies show that the MATN1 promoter region was associated with both susceptibility and disease progression in Adolescent idiopathic scoliosis.

Overview

Product Name	Anti-Cartilage matrix protein MATN1 Antibody
Reactive Species	Human, Mouse, Rat
Description	Boster Bio Anti-Cartilage matrix protein MATN1 Antibody (Catalog # A07385). Tested in ELISA, WB, IHC-P, IF applications. This antibody reacts with Human, Mouse, Rat.
Application	ELISA, IF, IHC-P, WB
Clonality	Polyclonal
Formulation	MATN1 Antibody is supplied in PBS containing 0.02% sodium azide.
Storage Instructions	MATN1 antibody can be stored at 4°C, stable for up to one year. Antibodies should not be exposed to prolonged high temperatures.
Host	Rabbit
Uniprot ID	P21941

Technical Details

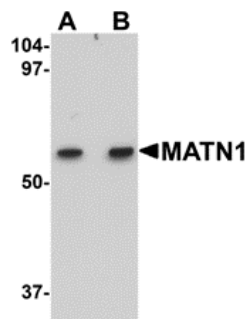
Immunogen	MATN1 antibody was raised against a 13 amino acid synthetic peptide from near the carboxy terminus of human MATN1. The immunogen is located within amino acids 370 - 420 of MATN1.
Predicted Reactive Species	Chicken
Isotype	IgG
Form	Liquid
Concentration	1 mg/mL
Purification	MATN1 Antibody is affinity chromatography purified via peptide column.

Suggested Dilutions

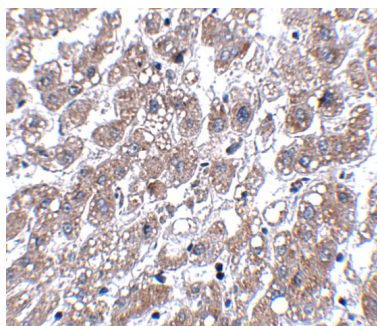
MATN1 antibody can be used for detection of MATN1 by Western blot at 1 - 2 ug/mL. Antibody can also be used for immunohistochemistry starting at 5 ug/mL. For immunofluorescence start at 20 ug/mL.

Antibody validated: Western Blot in rat samples; Immunohistochemistry in human samples and Immunofluorescence in human samples. All other applications and species not yet tested. Optimal dilutions for each application should be determined by the researcher.

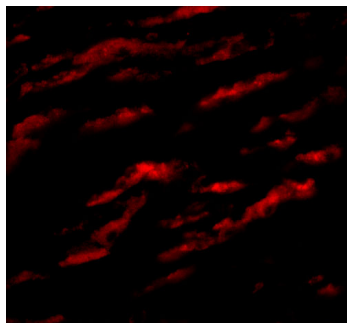
Anti-Cartilage matrix protein MATN1 Antibody (A07385) Images



Western blot analysis of MATN1 in rat liver tissue lysate with MATN1 antibody at (A) 1 and (B) 2 ug/mL.



Immunohistochemistry of MATN1 in human liver tissue with MATN1 antibody at 5 ug/mL.



Immunofluorescence of MATN1 in Human Liver cells with MATN1 antibody at 20 ug/mL.

Submit a product review to [Biocompare.com](https://www.biocompare.com)

Submit a review of this product to [Biocompare.com](https://www.biocompare.com) to receive a \$20 Amazon.com giftcard! Your reviews help your fellow scientists make the right decisions. Thank you for your contribution.



Anti-Cartilage matrix protein MATN1 Antibody

For Research Use Only. Not for use in diagnostic procedures.