

Anti-Zinc finger protein GLIS2 GLIS2 Antibody

Catalog Number: A07390

About GLIS2

GLIS2, also known as neuronal Krueppel-like, is a 524 amino acid protein that belongs to the GLI C2H2-type zinc-finger protein family (1). GLIS2 can act either as a transcription repressor or as a transcription activator and may be involved in neuron differentiation (1,2). GLIS2 is expressed at high levels in kidney and at low levels in heart, lung and placenta. Mutations of GLIS2 have been suggested to be associated with development of progressive chronic kidney disease with characteristics resembling nephronophthisis (3,4).

Overview

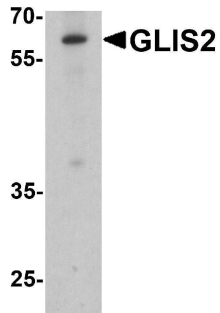
Product Name	Anti-Zinc finger protein GLIS2 GLIS2 Antibody
Reactive Species	Human, Mouse, Rat
Description	Boster Bio Anti-Zinc finger protein GLIS2 GLIS2 Antibody (Catalog # A07390). Tested in ELISA, WB, IHC-P applications. This antibody reacts with Human, Mouse, Rat.
Application	ELISA, IHC-P, WB
Clonality	Polyclonal
Formulation	GLIS2 antibody is supplied in PBS containing 0.02% sodium azide.
Storage Instructions	Antibody can be stored at 4°C up to one year. Antibodies should not be exposed to prolonged high temperatures.
Host	Rabbit
Uniprot ID	Q9BZE0

Technical Details

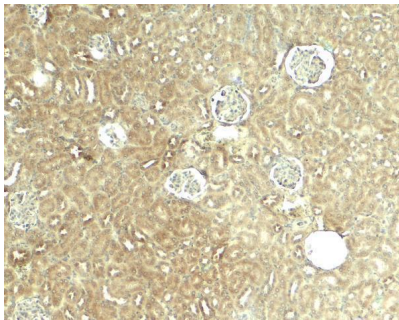
Immunogen	GLIS2 antibody was raised against an 18 amino acid peptide near the center of human GLIS2. The immunogen is located within amino acids 260 - 310 of GLIS2.
Predicted Reactive Species	Bovine
Cross Reactivity	GLIS2 antibody is human, mouse and rat reactive.
Isotype	IgG
Form	Liquid
Concentration	1 mg/mL
Purification	GLIS2 antibody is affinity chromatography purified via peptide column.
Suggested Dilutions	GLIS2 antibody can be used for detection of GLIS2 by Western blot at 1 - 2 ug/ml. Antibody can also

be used for immunohistochemistry starting at 5 ug/mL.
Antibody validated: Western Blot in human samples and Immunohistochemistry in mouse samples.
All other applications and species not yet tested. Optimal dilutions for each application should be determined by the researcher.

Anti-Zinc finger protein GLIS2 GLIS2 Antibody (A07390) Images



Western blot analysis of GLIS2 in K562 cell lysate with GLIS2 antibody at 1 ug/ml.



Immunohistochemistry of GLIS2 in mouse kidney tissue with GLIS2 antibody at 5 ug/ml.

Submit a product review to Biocompare.com

Submit a review of this product to Biocompare.com to receive a \$20 Amazon.com giftcard! Your reviews help your fellow scientists make the right decisions. Thank you for your contribution.



Anti-Zinc finger protein GLIS2 GLIS2 Antibody

For Research Use Only. Not for use in diagnostic procedures.